

Apolipoprotein A2 Polyclonal Antibody

catalog number: **E-AB-90927**

Note: Centrifuge before opening to ensure complete recovery of vial contents.

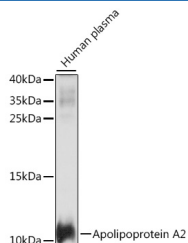
Description

Reactivity	Human;Mouse;Rat
Immunogen	A synthetic peptide of human Apolipoprotein A2
Host	Rabbit
Isotype	IgG
Purification	Affinity purification
Buffer	Phosphate buffered solution, pH 7.4, containing 0.05% stabilizer and 50% glycerol.

Applications

Applications	Recommended Dilution
WB	1:500-1:2000
IF	1:50-1:200

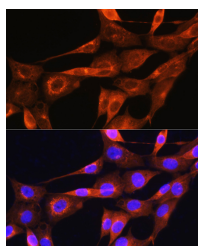
Data



Western blot analysis of extracts of human plasma using Apolipoprotein A2 Polyclonal Antibody at 1:1000 dilution.

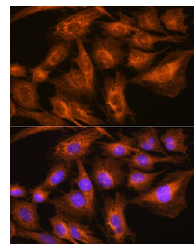
Observed-MW:11 kDa

Calculated-MW:11 kDa



Immunofluorescence analysis of NIH/3T3 cells using Apolipoprotein A2 Polyclonal Antibody at dilution of 1:100.

Blue: DAPI for nuclear staining.



Immunofluorescence analysis of C6 cells using Apolipoprotein A2 Polyclonal Antibody at dilution of 1:100.

Blue: DAPI for nuclear staining.

Preparation & Storage

Storage	Store at -20°C Valid for 12 months. Avoid freeze / thaw cycles.
Shipping	The product is shipped with ice pack, upon receipt, store it immediately at the temperature recommended.

Background

This gene encodes apolipoprotein (apo-) A-II, which is the second most abundant protein of the high density lipoprotein particles. The protein is found in plasma as a monomer, homodimer, or heterodimer with apolipoprotein D. Defects in this gene may result in apolipoprotein A-II deficiency or hypercholesterolemia.

For Research Use Only