

COL16A1 Polyclonal Antibody

catalog number: **E-AB-92131**

Note: Centrifuge before opening to ensure complete recovery of vial contents.

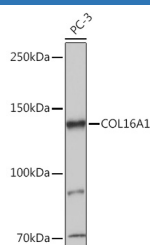
Description

Reactivity	Human;Mouse;Rat
Immunogen	A synthetic peptide of human COL16A1
Host	Rabbit
Isotype	IgG
Purification	Affinity purification
Buffer	Phosphate buffered solution, pH 7.4, containing 0.05% stabilizer and 50% glycerol.

Applications

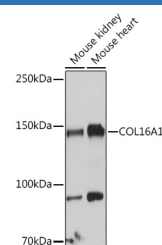
WB	1:500-1:2000
-----------	--------------

Data



Western blot analysis of extracts of PC-3 cells using COL16A1 Polyclonal Antibody at 1:1000 dilution.

Observed-MV:145 kDa
Calculated-MV:157 kDa



Western blot analysis of extracts of various cell lines using COL16A1 Polyclonal Antibody at 1:1000 dilution.

Observed-MV:145 kDa
Calculated-MV:157 kDa

Preparation & Storage

Storage	Store at -20°C Valid for 12 months. Avoid freeze / thaw cycles.
Shipping	The product is shipped with ice pack, upon receipt, store it immediately at the temperature recommended.

Background

This gene encodes the alpha chain of type XVI collagen, a member of the FACIT collagen family (fibril-associated collagens with interrupted helices). Members of this collagen family are found in association with fibril-forming collagens such as type I and II, and serve to maintain the integrity of the extracellular matrix. High levels of type XVI collagen have been found in fibroblasts and keratinocytes, and in smooth muscle and amnion.

For Research Use Only