

# KIF2A Polyclonal Antibody

catalog number: E-AB-53005

**Note:** Centrifuge before opening to ensure complete recovery of vial contents.

## Description

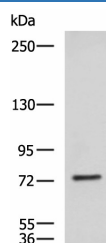
|                     |  |
|---------------------|--|
| <b>Reactivity</b>   | Human;Mouse;Rat  |
| <b>Immunogen</b>    | Fusion protein of human KIF2A  |
| <b>Host</b>         | Rabbit   |
| <b>Isotype</b>      | IgG  |
| <b>Purification</b> | Antigen affinity purification  |
| <b>Conjugation</b>  | Unconjugated   |
| <b>buffer</b>       | Phosphate buffered solution, pH 7.4, containing 0.05% stabilizer and 50% glycerol. |

## Applications

## Recommended Dilution

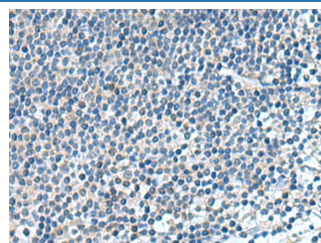
|            |              |
|------------|--------------|
| <b>WB</b>  | 1:500-1:2000 |
| <b>IHC</b> | 1:50-1:100   |

## Data



Western blot analysis of NIH/3T3 cell lysate using KIF2A Polyclonal Antibody at dilution of 1:850

**Observed-MV: Refer to figures**  
**Calculated-MV: 80 kDa**



Immunohistochemistry of paraffin-embedded Human tonsil tissue using KIF2A Polyclonal Antibody at dilution of 1:65 (x200)

## Preparation & Storage

|                 |  |
|-----------------|--|
| <b>Storage</b>  | Store at -20°C Valid for 12 months. Avoid freeze / thaw cycles.  |
| <b>Shipping</b> | The product is shipped with ice pack, upon receipt, store it immediately at the temperature recommended. |

## Background

The protein encoded by this gene is a plus end-directed motor required for normal mitotic progression. The encoded protein is required for normal spindle activity during mitosis and is necessary for normal brain development. Several transcript variants encoding different isoforms have been found for this gene.

## For Research Use Only