

# ENO2 Polyclonal Antibody

catalog number: E-AB-70256

**Note:** Centrifuge before opening to ensure complete recovery of vial contents.

## Description

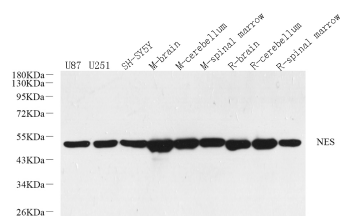
<b>Reactivity</b>	Human;Mouse;Rat
<b>Immunogen</b>	KLH conjugated Synthetic peptide corresponding to Mouse NSE
<b>Host</b>	Rabbit
<b>Isotype</b>	IgG
<b>Purification</b>	Affinity purification
<b>Conjugation</b>	Unconjugated
<b>buffer</b>	Phosphate buffered solution, pH 7.4, containing 0.05% stabilizer, 1% protein protectant and 50% glycerol.

## Applications

## Recommended Dilution

<b>WB</b>	1:1000-1:2000
-----------	---------------

## Data



Western Blot analysis of various samples using ENO2 Polyclonal Antibody at dilution of 1:2000.

**Observed-MV:47 kDa**

**Calculated-MV:47 kDa**

## Preparation & Storage

<b>Storage</b>	Store at -20°C Valid for 12 months. Avoid freeze / thaw cycles.
<b>Shipping</b>	The product is shipped with ice pack, upon receipt, store it immediately at the temperature recommended.

## Background

Enolases are cytoplasmic glycolytic enzymes that may be involved in differentiation. Three enolase isoenzymes, alpha, beta and gamma, are present in mammalian cells. The alpha form is expressed in most tissues, whereas the beta form is expressed in muscle tissue. The gamma enolase (ENO2), a homodimer, is found in mature neurons and cells of neuronal origin. A switch from alpha enolase to gamma enolase occurs in neural tissue during development.

## For Research Use Only