

# Recombinant Mouse Carbonic Anhydrase 4/CA4 Protein (aa 17-420, His Tag)



Catalog Number:PKSM040976

**Note:** Centrifuge before opening to ensure complete recovery of vial contents.

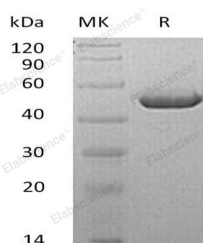
## Description

<b>Synonyms</b>	CA4;CAIV;CA-IV;Car4;Carbonate dehydratase IV;carbonic anhydrase 4;carbonic anhydrase IVRP17;carbonic dehydratase IV;EC4.2.1.1;retinitis pigmentosa 17;RP17
<b>Species</b>	Mouse
<b>Expression Host</b>	HEK293 Cells
<b>Sequence</b>	Gly17-Tyr420
<b>Accession</b>	Q6P8K8
<b>Calculated Molecular Weight</b>	46.7 kDa
<b>Observed molecular weight</b>	50 kDa
<b>Tag</b>	C-His

## Properties

<b>Purity</b>	> 95 % as determined by reducing SDS-PAGE.
<b>Endotoxin</b>	< 1.0 EU per µg of the protein as determined by the LAL method.
<b>Storage</b>	Store at < -20°C, stable for 6 months. Please minimize freeze-thaw cycles.
<b>Shipping</b>	This product is provided as liquid. It is shipped at frozen temperature with blue ice/gel packs. Upon receipt, store it immediately at < - 20°C.
<b>Formulation</b>	Supplied as a 0.2 µm filtered solution of 20mM Tris-HCl, 150mM NaCl, 10% Glycerol, pH 8.0.
<b>Reconstitution</b>	Not Applicable

## Data



> 95 % as determined by reducing SDS-PAGE.

## Background

Carboxypeptidase A4 (CPA4) is a member of the peptidase M14 family. CPA4 is metalloprotease that could be involved in the histone hyperacetylation pathway. CPA4 binds one zinc ion per subunit and could catalyze to release of a C-terminal amino acid, with preference for -Phe, -Leu, -Ile, -Met, -Tyr and -Val. They have distinct expression patterns and different specificities for example, preferentially cleaving aromatic (carboxypeptidase As) or basic (carboxypeptidase Bs) residues. Several, such as carboxypeptidase Xs, have lost their catalytic activity. Carboxypeptidases play important roles in digestion of food, processing of bioactive peptides and blood coagulation.

## For Research Use Only

A Reliable Research Partner in Life Science and Medicine

Toll-free: 1-888-852-8623

Web: [www.elabscience.com](http://www.elabscience.com)

Tel: 1-832-243-6086

Email: [techsupport@elabscience.com](mailto:techsupport@elabscience.com)

Fax: 1-832-243-6017