

# CLTC Polyclonal Antibody

catalog number: E-AB-13153

**Note:** Centrifuge before opening to ensure complete recovery of vial contents.

## Description

<b>Reactivity</b>	Human;Mouse;Rat
<b>Immunogen</b>	Synthetic peptide of human CLTC
<b>Host</b>	Rabbit
<b>Isotype</b>	IgG
<b>Purification</b>	Affinity purification
<b>Conjugation</b>	Unconjugated
<b>buffer</b>	Phosphate buffered solution, pH 7.4, containing 0.05% stabilizer and 50% glycerol.

## Applications

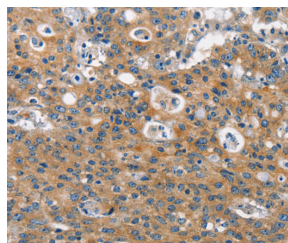
Applications	Recommended Dilution
<b>WB</b>	1:200-1:1000
<b>IHC</b>	1:50-1:200

## Data

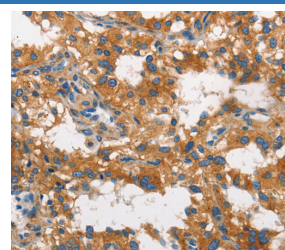


Western Blot analysis of NIH/3T3 and HeLa cell using CLTC Polyclonal Antibody at dilution of 1:300

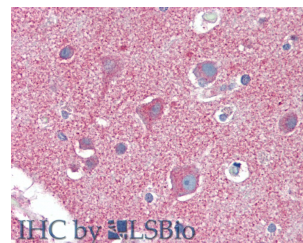
**Calculated-MV:192 kDa**



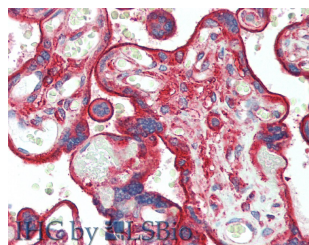
Immunohistochemistry of paraffin-embedded Human gastric cancer using CLTC Polyclonal Antibody at dilution of 1:60



Immunohistochemistry of paraffin-embedded Human thyroid cancer using CLTC Polyclonal Antibody at dilution of 1:60



Immunohistochemistry of paraffin-embedded Brain, Cortex tissue using CLTC Polyclonal Antibody at dilution of 1:60 (Elabscience Product Detected by Lifespan).



Immunohistochemistry of paraffin-embedded Placenta tissue using CLTC Polyclonal Antibody at dilution of 1:60 (Elabscience Product Detected by Lifespan).

## Preparation & Storage

**Storage** Store at -20°C Valid for 12 months. Avoid freeze / thaw cycles.

## For Research Use Only

# CLTC Polyclonal Antibody

catalog number: E-AB-13153



## Shipping

The product is shipped with ice pack, upon receipt, store it immediately at the temperature recommended.

## Background

Clathrin is a major protein component of the cytoplasmic face of intracellular organelles, called coated vesicles and coated pits. These specialized organelles are involved in the intracellular trafficking of receptors and endocytosis of a variety of macromolecules. The basic subunit of the clathrin coat is composed of three heavy chains and three light chains.

## For Research Use Only

A Reliable Research Partner in Life Science and Medicine  
Tel: 400-999-2100

Email: [techsupport@elabscience.cn](mailto:techsupport@elabscience.cn)

Web: [www.elabscience.cn](http://www.elabscience.cn)

Rev. V1.8