

# Recombinant Mouse Serpin G1/C1IN Protein (His Tag)

**DIA • AN**<sup>®</sup>  
by Elabscience

Catalog Number: PKSM041143

**Note:** Centrifuge before opening to ensure complete recovery of vial contents.

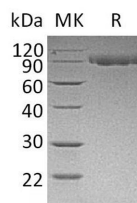
## Description

<b>Synonyms</b>	SERPIN G1; Plasma protease C1 inhibitor; C1 Inh; C1 esterase inhibitor; C1-inhibiting factor; Serping1; C1nh
<b>Species</b>	Mouse
<b>Expression Host</b>	HEK293 Cells
<b>Sequence</b>	Ala20-Gly504
<b>Accession</b>	P97290
<b>Calculated Molecular Weight</b>	54.6 kDa
<b>Observed molecular weight</b>	90 kDa
<b>Tag</b>	C-His

## Properties

<b>Purity</b>	> 95 % as determined by reducing SDS-PAGE.
<b>Endotoxin</b>	< 1.0 EU per µg of the protein as determined by the LAL method.
<b>Storage</b>	Generally, lyophilized proteins are stable for up to 12 months when stored at -20 to -80°C. Reconstituted protein solution can be stored at 4-8°C for 2-7 days. Aliquots of reconstituted samples are stable at < -20°C for 3 months.
<b>Shipping</b>	This product is provided as lyophilized powder which is shipped with ice packs.
<b>Formulation</b>	Lyophilized from a 0.2 µm filtered solution of 20mM Tris-HCl, 150mM NaCl, pH 8.0. Normally 5 % - 8 % trehalose, mannitol and 0.01% Tween80 are added as protectants before lyophilization. Please refer to the specific buffer information in the print
<b>Reconstitution</b>	Please refer to the printed manual for detailed information.

## Data



> 95 % as determined by reducing SDS-PAGE.

## Background

SERPIN G1 is a member of the serpin family. The C-terminal serpin domain is similar to other serpins, and this part of C1-INH provides the inhibitory activity. SERPIN G1 is involved in the inhibition of the complement system to prevent spontaneous activation. SERPIN G1 may play a potentially crucial role in regulating important physiological pathways including complement activation, blood coagulation, fibrinolysis and the generation of kinins. SERPIN G1 prevents the proteolytic cleavage of later complement components C4 and C2 by C1 and MBL. SERPIN G1 is a very efficient physiological inhibitor of FXIIa, plasma kallikrein and fXIa, and could inhibit chymotrypsin and kallikrein. It forms a

## For Research Use Only

A Reliable Research Partner in Life Science and Medicine

Toll-free: 1-888-852-8623

Web: [www.elabscience.com](http://www.elabscience.com)

Tel: 1-832-243-6086

Email: [techsupport@elabscience.com](mailto:techsupport@elabscience.com)

Fax: 1-832-243-6017

# Recombinant Mouse Serpin G1/C1IN Protein (His Tag)

Catalog Number: PKSM041143

**DIA • AN**®  
by Elabscience

---

proteolytically inactive stoichiometric complex with the C1r or C1s proteases in the C1 complex of classical pathway of complement. Activation of the C1 complex is under control of the C1-inhibitor.

---

## For Research Use Only

A Reliable Research Partner in Life Science and Medicine

Toll-free: 1-888-852-8623

Tel: 1-832-243-6086

Fax: 1-832-243-6017

Web: [www.elabscience.com](http://www.elabscience.com)

Email: [techsupport@elabscience.com](mailto:techsupport@elabscience.com)