

Recombinant Phospho-IkB-α (Ser32) Monoclonal Antibody

catalog number: AN301182L

Note: Centrifuge before opening to ensure complete recovery of vial contents.

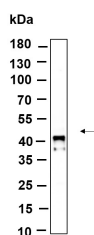
Description

| | |
|---------------------|---|
| Reactivity | Human;Mouse;Rat |
| Immunogen | A synthetic peptide corresponding to residues around (Ser32) of Human Phospho-IκB-α |
| Host | Rabbit |
| Isotype | IgG,κ |
| Clone | B941 |
| Purification | Protein A |
| Buffer | PBS, 50% glycerol, 0.05% Proclin 300, 0.05% protein protectant. |

Applications

| Applications | Recommended Dilution |
|--------------|----------------------|
| WB | 1:2000-1:10000 |
| IF | 1:200-1:1000 |
| ELISA | 1:5000-1:20000 |
| IP | 1:50-1:200 |

Data



Western Blot with Recombinant Phospho-IkB-α (Ser32) Monoclonal Antibody at dilution of 1:1000 dilution. Lane A: K562 lysate.

Observed-MW:40 kDa

Calculated-MW:36 kDa

Preparation & Storage

| | |
|-----------------|---|
| Storage | Store at -20°C Valid for 12 months. Avoid freeze / thaw cycles. |
| Shipping | Ice bag |

Background

This gene encodes a member of the NF-kappa-B inhibitor family, which contain multiple ankrin repeat domains. The encoded protein interacts with REL dimers to inhibit NF-kappa-B/REL complexes which are involved in inflammatory responses. The encoded protein moves between the cytoplasm and the nucleus via a nuclear localization signal and CRM1-mediated nuclear export. Mutations in this gene have been found in ectodermal dysplasia anhidrotic with T-cell immunodeficiency autosomal dominant disease.

For Research Use Only