

Recombinant Human JAM-B/CD322 Protein (His Tag)

Catalog Number: PKSH032662

Note: Centrifuge before opening to ensure complete recovery of vial contents.

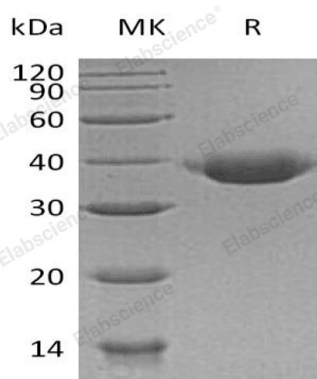
Description

| | |
|----------------------|---|
| Species | Human |
| Source | HEK293 Cells-derived Human JAM-B;CD322 protein Phe29-Asn236, with an C-terminal His |
| Calculated MW | 24.3 kDa |
| Observed MW | 35-39 kDa |
| Accession | P57087 |
| Bio-activity | Not validated for activity |

Properties

| | |
|-----------------------|--|
| Purity | > 95 % as determined by reducing SDS-PAGE. |
| Endotoxin | < 1.0 EU per µg of the protein as determined by the LAL method. |
| Storage | Generally, lyophilized proteins are stable for up to 12 months when stored at -20 to -80 °C. Reconstituted protein solution can be stored at 4-8°C for 2-7 days. Aliquots of reconstituted samples are stable at < -20°C for 3 months. |
| Shipping | This product is provided as lyophilized powder which is shipped with ice packs. |
| Formulation | Lyophilized from a 0.2 µm filtered solution of 20mM Tris-HCl, 150mM NaCl, pH 8.0. Normally 5% - 8% trehalose, mannitol and 0.01% Tween 80 are added as protectants before lyophilization. |
| | Please refer to the specific buffer information in the printed manual. |
| Reconstitution | Please refer to the printed manual for detailed information. |

Data



> 95 % as determined by reducing SDS-PAGE.

Background

Junctional Adhesion Molecule B (JAM-B) is a single-pass type I membrane protein that belongs to the junctional adhesion molecules family. JAM-B includes a signal sequence (aa 1-28); an extracellular region (aa 29-238) with one Ig-like C2-type domain and one Ig-like V-type domain; a transmembrane segment (aa 239-259); and a cytoplasmic domain (aa 260 - 298). JAMB is localized to the tight junctions between endothelial cells or epithelial cells. JAM-B is prominently expressed in the heart; placenta; lung; foreskin and lymph node. It is also present on the endothelia of other vessels. JAM-B acts as an adhesive ligand for interacting with a variety of immune cell types and may play a role in lymphocyte homing to secondary lymphoid organs.

For Research Use Only