

## LGR6 Polyclonal Antibody

catalog number: **E-AB-90747**

**Note:** Centrifuge before opening to ensure complete recovery of vial contents.

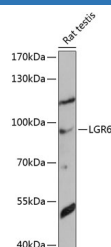
### Description

<b>Reactivity</b>	Human;Rat
<b>Immunogen</b>	A synthetic peptide of human LGR6
<b>Host</b>	Rabbit
<b>Isotype</b>	IgG
<b>Purification</b>	Affinity purification
<b>Buffer</b>	Phosphate buffered solution, pH 7.4, containing 0.05% stabilizer and 50% glycerol.

### Applications Recommended Dilution

<b>WB</b>	1:500-1:2000
-----------	--------------

### Data



Western blot analysis of extracts of rat testis using LGR6 Polyclonal Antibody at 1:1000 dilution.

**Observed-MV:98 kDa**

**Calculated-MV:89 kDa/99 kDa/104 kDa**

### Preparation & Storage

<b>Storage</b>	Store at -20°C Valid for 12 months. Avoid freeze / thaw cycles.
<b>Shipping</b>	The product is shipped with ice pack, upon receipt, store it immediately at the temperature recommended.

### Background

This gene encodes a member of the leucine-rich repeat-containing subgroup of the G protein-coupled 7-transmembrane protein superfamily. The encoded protein is a glycoprotein hormone receptor with a large N-terminal extracellular domain that contains leucine-rich repeats important for the formation of a horseshoe-shaped interaction motif for ligand binding. Alternative splicing of this gene results in multiple transcript variants.

### For Research Use Only