

Recombinant Human LILRA2/ILT1 Protein (His Tag)

Catalog Number:PKSH032696



Note: Centrifuge before opening to ensure complete recovery of vial contents.

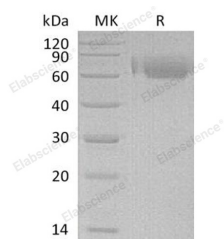
Description

Synonyms	Leukocyte Immunoglobulin-Like Receptor Subfamily A Member 2;CD85 Antigen-Like Family Member H;Immunoglobulin-Like Transcript 1;ILT-1;Leukocyte Immunoglobulin-Like Receptor 7;LIR-7;CD85h;LILRA2;ILT1;LIR7
Species	Human
Expression Host	HEK293 Cells
Sequence	Gly24-Ser420
Accession	Q8N149-2
Calculated Molecular Weight	44.8 kDa
Observed molecular weight	66 kDa
Tag	C-His

Properties

Purity	> 95 % as determined by reducing SDS-PAGE.
Endotoxin	< 1.0 EU per µg of the protein as determined by the LAL method.
Storage	Generally, lyophilized proteins are stable for up to 12 months when stored at -20 to -80°C. Reconstituted protein solution can be stored at 4-8°C for 2-7 days. Aliquots of reconstituted samples are stable at < -20°C for 3 months.
Shipping	This product is provided as lyophilized powder which is shipped with ice packs.
Formulation	Lyophilized from a 0.2 µm filtered solution of 20mM PB,150mM NaCl,pH7.4. Normally 5 % - 8 % trehalose, mannitol and 0.01% Tween80 are added as protectants before lyophilization. Please refer to the specific buffer information in the printed manual
Reconstitution	Please refer to the printed manual for detailed information.

Data



> 95 % as determined by reducing SDS-PAGE.

Background

Leukocyte Immunoglobulin-Like Receptor Subfamily A Member 2 (LILRA2) is a single-pass type I membrane protein. LILRA2 is expressed predominantly on monocytes and B cells, and at lower levels on dendritic cells and natural killer cells. LILRA2 contains four Ig-like C2-type domains, with short cytoplasmic domains lacking an immunoreceptor tyrosine-based inhibitory motif (ITIM) and with transmembrane regions containing a charged arginine residue, may initiate stimulatory cascades. LILRA2 does not bind class I MHC antigens.

For Research Use Only

A Reliable Research Partner in Life Science and Medicine

Toll-free: 1-888-852-8623

Web: www.elabscience.com

Tel: 1-832-243-6086

Email: techsupport@elabscience.com

Fax: 1-832-243-6017