

Recombinant IL 26 Monoclonal Antibody

catalog number: **E-AB-81571**

Note: Centrifuge before opening to ensure complete recovery of vial contents.

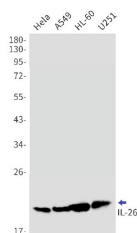
Description

Reactivity	Human
Immunogen	A synthetic peptide of human IL-26
Host	Rabbit
Isotype	IgG
Clone	R07-3C0
Purification	Affinity Purified
Buffer	50mM Tris-Glycine(pH 7.4), 0.15M NaCl, 40% Glycerol, 0.05% stabilizer and 0.05% protective protein.

Applications

Applications	Recommended Dilution
WB	1:500-1:1000
IHC	1:50-1:100

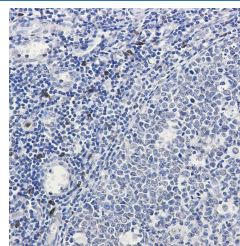
Data



Western blot detection of IL-26 in Hela,A549,HL-60,U251 cell lysates using IL-26 Rabbit mAb(1:1000 diluted).Predicted band size:20kDa.Observed band size:20kDa.

Observed-MW:20 kDa

Calculated-MW:20 kDa



Immunohistochemistry of IL-26 in paraffin-embedded Human tonsil using IL-26 Rabbit mAb at dilution 1:50

Preparation & Storage

Storage	Store at -20°C Valid for 12 months. Avoid freeze / thaw cycles.
Shipping	The product is shipped with ice pack,upon receipt,store it immediately at the temperature recommended.

Background

IL26 (Interleukin 26) is a Protein Coding gene. Among its related pathways are PEDF Induced Signaling and TGF-Beta Pathway. GO annotations related to this gene include cytokine activity.This gene was identified by its overexpression specifically in herpesvirus samimiri-transformed T cells. The encoded protein is a member of the IL10 family of cytokines. It is a secreted protein and may function as a homodimer. This protein is thought to contribute to the transformed phenotype of T cells after infection by herpesvirus samimiri.

For Research Use Only