

# AF/LE Purified Anti-Mouse CD3 Antibody[17A2]

catalog number: E-AB-F10130

**Note:** Centrifuge before opening to ensure complete recovery of vial contents.

## Description

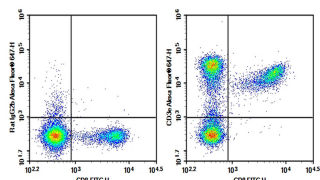
<b>Reactivity</b>	Mouse
<b>Immunogen</b>	Recombinant Mouse CD3 protein
<b>Host</b>	Rat
<b>Isotype</b>	Rat IgG2b, $\kappa$
<b>Clone</b>	17A2
<b>Purification</b>	>98%, Protein A/G purified
<b>Conjugation</b>	None (AF/LE)
<b>buffer</b>	Sterile PBS, pH 7.2. < 1.0 EU per mg of the antibody as determined by the LAL method

## Applications

## Recommended Dilution

<b>FCM</b>	2 $\mu\text{g/mL}$ ( $1 \times 10^5$ - $5 \times 10^5$ cells)
------------	---

## Data



C57/BL6 Mouse splenocytes were stained with 0.2  $\mu\text{g}$  AF/LE Purified Anti-Mouse CD3 Antibody[17A2] (Right) and 0.2  $\mu\text{g}$  Rat IgG2b,  $\kappa$  Isotype Control (Left), followed by Alexa Fluor<sup>®</sup> 647-conjugated Goat Anti-Rat IgG Secondary Antibody, then anti-Mouse CD8 FITC-conjugated Monoclonal Antibody.

## Preparation & Storage

<b>Storage</b>	Store at 4°C valid for 12 months or -20°C valid for long term storage, avoid freeze / thaw cycles. This preparation contains no preservatives, thus it should be handled under aseptic conditions.
<b>Shipping</b>	Ice bag

## Background

CD3, also known as T3, is a member of the Ig superfamily and primarily expressed on T cells, NK-T cells, and at different levels on thymocytes during T cell differentiation. CD3 is composed of CD3 $\epsilon$ ,  $\delta$ ,  $\gamma$  and  $\zeta$  chains. It forms a TCR complex by associating with TCR  $\alpha/\beta$  or  $\gamma/\delta$  chains. CD3 plays a critical role in TCR signal transduction, T cell activation, and antigen recognition by binding the peptide/MHC antigen complex.

## For Research Use Only