

EPO Polyclonal Antibody

catalog number: **E-AB-67696**

Note: Centrifuge before opening to ensure complete recovery of vial contents.

Description

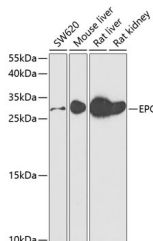
Reactivity	Human;Mouse;Rat
Immunogen	A synthetic peptide of human EPO
Host	Rabbit
Isotype	IgG
Purification	Affinity purification
Buffer	Phosphate buffered solution, pH 7.4, containing 0.05% stabilizer and 50% glycerol.

Applications

Recommended Dilution

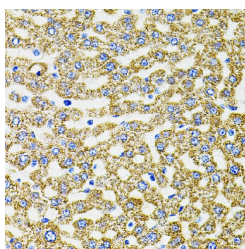
WB	1:500-1:2000
IHC	1:100-1:200

Data

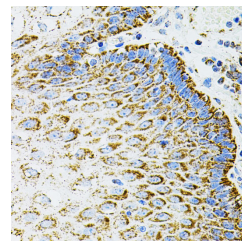


Western blot analysis of extracts of various cell lines using EPO Polyclonal Antibody at dilution of 1:500.

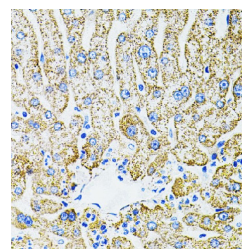
Observed-MW:30 kDa
Calculated-MW:21 kDa



Immunohistochemistry of paraffin-embedded Rat liver using EPO Polyclonal Antibody



Immunohistochemistry of paraffin-embedded Human esophagus using EPO Polyclonal Antibody



Immunohistochemistry of paraffin-embedded Human liver damage using EPO Polyclonal Antibody

Preparation & Storage

Storage	Store at -20°C Valid for 12 months. Avoid freeze / thaw cycles.
Shipping	The product is shipped with ice pack, upon receipt, store it immediately at the temperature recommended.

Background

This gene is a member of the EPO/TPO family and encodes a secreted, glycosylated cytokine composed of four alpha helical bundles. The protein is found in the plasma and regulates red cell production by promoting erythroid differentiation and initiating hemoglobin synthesis. This protein also has neuroprotective activity against a variety of potential brain injuries and antiapoptotic functions in several tissue types.

For Research Use Only