

# MAGEA1 Polyclonal Antibody

Catalog Number: E-AB-19419



**Note:** Centrifuge before opening to ensure complete recovery of vial contents.

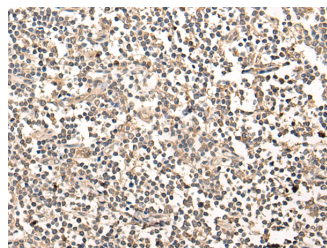
## Description

|                     |   |
|---------------------|---|
| <b>Reactivity</b>   | Human   |
| <b>Immunogen</b>    | Synthetic peptide of human MAGEA1                       |
| <b>Host</b>         | Rabbit  |
| <b>Isotype</b>      | IgG   |
| <b>Purification</b> | Antigen affinity purification                           |
| <b>Conjugation</b>  | Unconjugated  |
| <b>Formulation</b>  | PBS with 0.05% NaN <sub>3</sub> and 40% Glycerol, pH7.4 |

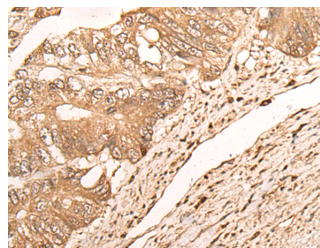
## Applications Recommended Dilution

|              |                |
|--------------|----------------|
| <b>IHC</b>   | 1:50-1:300     |
| <b>ELISA</b> | 1:5000-1:10000 |

## Data



Immunohistochemistry of paraffin-embedded Human tonsil tissue using MAGEA1 Polyclonal Antibody at dilution of 1:65(×200)



Immunohistochemistry of paraffin-embedded Human colorectal cancer tissue using MAGEA1 Polyclonal Antibody at dilution of 1:65(×200)

## Preparation & Storage

**Storage** Store at -20°C. Avoid freeze / thaw cycles.

## Background

This gene is a member of the MAGEA gene family. The members of this family encode proteins with 50 to 80% sequence identity to each other. The promoters and first exons of the MAGEA genes show considerable variability, suggesting that the existence of this gene family enables the same function to be expressed under different transcriptional controls. The MAGEA genes are clustered at chromosomal location Xq28. They have been implicated in some hereditary disorders, such as dyskeratosis congenita.

## For Research Use Only

A Reliable Research Partner in Life Science and Medicine

Toll-free: 1-888-852-8623

Web: [www.elabscience.com](http://www.elabscience.com)

Tel: 1-832-243-6086

Email: [techsupport@elabscience.com](mailto:techsupport@elabscience.com)

Fax: 1-832-243-6017