

Recombinant Human Cathepsin L2/CTSL2 Protein (His Tag)



Catalog Number: PKSH032183

Note: Centrifuge before opening to ensure complete recovery of vial contents.

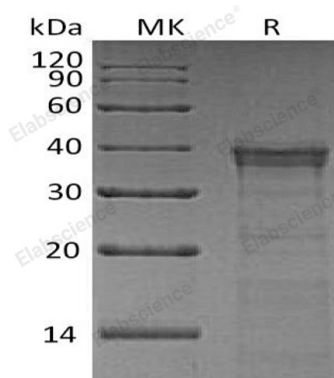
Description

Species	Human
Mol_Mass	36.7 kDa
Accession	O60911
Bio-activity	Not validated for activity

Properties

Purity	> 95 % as determined by reducing SDS-PAGE.
Endotoxin	< 1.0 EU per µg of the protein as determined by the LAL method.
Storage	Store at < -20°C, stable for 6 months. Please minimize freeze-thaw cycles.
Shipping	This product is provided as liquid. It is shipped at frozen temperature with blue ice/gel packs. Upon receipt, store it immediately at < - 20°C.
Formulation	Supplied as a 0.2 µm filtered solution of 20mM MES, 150mM NaCl, 5% Trehalose, 5% Mannitol, 0.01% Tween 80, pH5.5.
Reconstitution	Not Applicable

Data



> 95 % as determined by reducing SDS-PAGE.

Background

Cathepsin L2 belongs to the Peptidase C1 family. Cathepsin L2 can be autocatalytically converted to the mature form as a proenzyme in lysosomes at pH=7.0. Cathepsin L2 cannot be expressed in normal mammary gland, colon and peritumoral tissue, but it can be expressed in breast carcinomas and colorectal tissues. These suggests Cathepsin L2 may play a role in tumor processes. Cathepsin L2 is specifically expressed in the testis, thymus, and corneal epithelium.

For Research Use Only

A Reliable Research Partner in Life Science and Medicine
Tel:400-999-2100

Email:techsupport@elabscience.cn

Web:www.elabscience.cn

Rev. V3.2