

# Recombinant Human MBL2/MBL/COLEC1 Protein (His Tag)

**DIA • AN**<sup>®</sup>  
by Elabscience

Catalog Number: PKSH032736

**Note:** Centrifuge before opening to ensure complete recovery of vial contents.

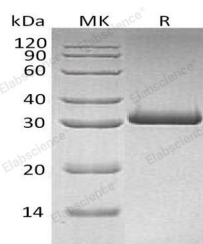
## Description

<b>Synonyms</b>	Mannose-Binding Protein C;MBP-C;Collectin-1;MBP1;Mannan-Binding Protein;Mannose-Binding Lectin;MBL2;MBL;COLEC1;HSMBPC;MBL;MBL2D;MBP;MBP1;MBPD
<b>Species</b>	Human
<b>Expression Host</b>	HEK293 Cells
<b>Sequence</b>	Glu21-Ile248
<b>Accession</b>	P11226
<b>Calculated Molecular Weight</b>	25.1 kDa
<b>Observed molecular weight</b>	31 kDa
<b>Tag</b>	C-His

## Properties

<b>Purity</b>	> 95 % as determined by reducing SDS-PAGE.
<b>Endotoxin</b>	< 1.0 EU per µg of the protein as determined by the LAL method.
<b>Storage</b>	Generally, lyophilized proteins are stable for up to 12 months when stored at -20 to -80°C. Reconstituted protein solution can be stored at 4-8°C for 2-7 days. Aliquots of reconstituted samples are stable at < -20°C for 3 months.
<b>Shipping</b>	This product is provided as lyophilized powder which is shipped with ice packs.
<b>Formulation</b>	Lyophilized from a 0.2 µm filtered solution of 20mM PB, 150mM NaCl, 5% Threhalose, pH 7.2. Normally 5 % - 8 % trehalose, mannitol and 0.01% Tween80 are added as protectants before lyophilization. Please refer to the specific buffer information in
<b>Reconstitution</b>	Please refer to the printed manual for detailed information.

## Data



> 95 % as determined by reducing SDS-PAGE.

## Background

Mannose-Binding Protein C (MBP-C) belongs to the Collectin family of innate immune defense proteins. MBL binds to an array of carbohydrate patterns on pathogen surfaces. Collectin family members share common structural features: a cysteine rich amino-terminal domain, a collagen-like region, an  $\alpha$ -helical coiled-coil neck domain and a carboxy terminal C-type Lectin or carbohydrate recognition domain (CRD). MBL homotrimerizes to form a structural unit joined by N-terminal disulfide bridges. These homotrimers further associates into oligomeric structures of up to 6 units. Whereas two

## For Research Use Only

A Reliable Research Partner in Life Science and Medicine

Toll-free: 1-888-852-8623

Web: [www.elabscience.com](http://www.elabscience.com)

Tel: 1-832-243-6086

Email: [techsupport@elabscience.com](mailto:techsupport@elabscience.com)

Fax: 1-832-243-6017

# Recombinant Human MBL2/MBL/COLEC1 Protein (His Tag)



Catalog Number: PKSH032736

---

forms of MBL proteins exist in rodents and other animals. Human MBL-2 is 25 kDa. Human MBL-2 is a secreted glycoprotein that is synthesized as a 248 amino acid (aa) precursor that contains a 20 aa signal sequence, a 21 aa cysteine-rich region, a 58 aa collagen-like segment and a 111 aa C-type lectin domain that binds to neutral bacterial carbohydrates.

---

## For Research Use Only

A Reliable Research Partner in Life Science and Medicine

Toll-free: 1-888-852-8623

Web: [www.elabscience.com](http://www.elabscience.com)

Tel: 1-832-243-6086

Email: [techsupport@elabscience.com](mailto:techsupport@elabscience.com)

Fax: 1-832-243-6017