

Cytokeratin 8 Monoclonal Antibody

catalog number: **AN200190P**

Note: *Centrifuge before opening to ensure complete recovery of vial contents.*

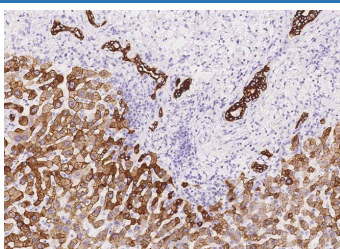
Description

Reactivity	Human
Immunogen	A synthetic peptide corresponding to the C-terminus of the Human Cytokeratin 8
Host	Mouse
Isotype	IgG1
Clone	10F13
Purification	Protein A
Buffer	0.2 µm filtered solution in PBS

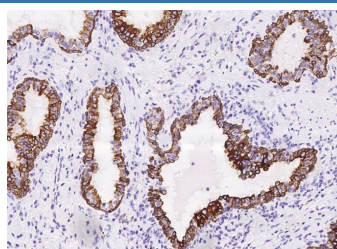
Applications Recommended Dilution

IHC-P	1:500-1:5000
ICC/IF	1:20-1:100

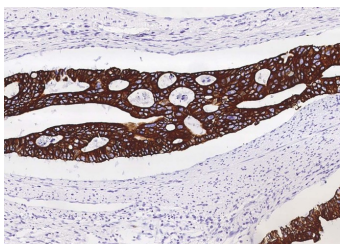
Data



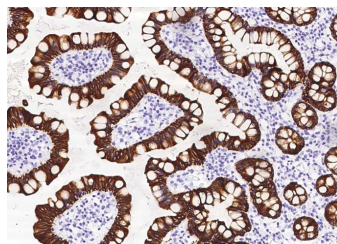
Immunohistochemistry of paraffin-embedded human liver using Cytokeratin 8 Monoclonal Antibody at dilution of 1:2000.



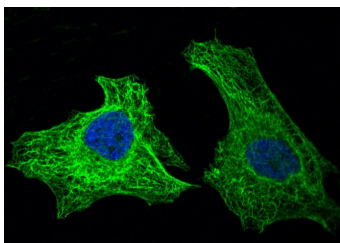
Immunohistochemistry of paraffin-embedded human prostate using Cytokeratin 8 Monoclonal Antibody at dilution of 1:2000.



Immunohistochemistry of paraffin-embedded human colon carcinoma using Cytokeratin 8 Monoclonal Antibody at dilution of 1:2000.



Immunohistochemistry of paraffin-embedded human small intestine using Cytokeratin 8 Monoclonal Antibody at dilution of 1:2000.



For Research Use Only

Toll-free: 1-888-852-8623
Web: www.elabscience.com

Tel: 1-832-243-6086
Email: techsupport@elabscience.com

Fax: 1-832-243-6017

Rev. V1.0

Immunofluorescence analysis of KRT8 in Hela cells. Cells were fixed with 4% PFA, permeabilized with 0.1% Triton X-100 in PBS, blocked with 10% serum, and incubated with mouse anti-Human KRT8 monoclonal antibody (dilution ratio 1:60) at 4°C overnight. Then cells were stained with the Alexa Fluor®488-conjugated Goat Anti-mouse IgG secondary antibody (green) and counterstained with DAPI (blue). Positive staining was localized to Cytoplasm.

Preparation & Storage

Storage	This antibody can be stored at 2°C-8°C for one month without detectable loss of activity. Antibody products are stable for twelve months from date of receipt when stored at -20°C to -80°C. Preservative-Free. Avoid repeated freeze-thaw cycles.
Shipping	Ice bag

Background

KRT8 (Keratin 8) is a Protein Coding gene. 2 alternatively spliced human isoforms have been reported. This gene is a member of the type II keratin family clustered on the long arm of chromosome 12. KRT8 is the major component of the intermediate filament cytoskeleton and is predominantly expressed in simple epithelial tissues. Aberrant expression of KRT8 is associated with multiple tumor progression and metastasis. KRT8 overexpression in renal cancer cell lines promoted cell migration and invasion. In contrast, KRT8 knockdown suppressed ccRCC metastasis both in vitro and in vivo. KRT8 expression may therefore be a biomarker or potential therapeutic target to identify patients with worse survival. Diseases associated with KRT8 include Liver Cirrhosis and Cryptogenic Cirrhosis.

For Research Use Only