

Recombinant Mouse SLAMF8 Protein (His Tag)

Catalog Number: PKSM041147

Note: Centrifuge before opening to ensure complete recovery of vial contents.

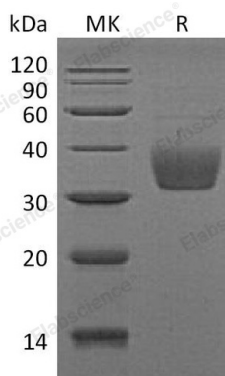
Description

| | |
|---------------------|----------------------------|
| Species | Mouse |
| Mol_Mass | 24.2 kDa |
| Accession | Q9D3G2 |
| Bio-activity | Not validated for activity |

Properties

| | |
|-----------------------|---|
| Purity | > 90 % as determined by reducing SDS-PAGE. |
| Endotoxin | < 1.0 EU per µg of the protein as determined by the LAL method. |
| Storage | Generally, lyophilized proteins are stable for up to 12 months when stored at -20 to -80 °C. Reconstituted protein solution can be stored at 4-8°C for 2-7 days. Aliquots of reconstituted samples are stable at < -20°C for 3 months. |
| Shipping | This product is provided as lyophilized powder which is shipped with ice packs. |
| Formulation | Lyophilized from a 0.2 µm filtered solution of 20mM PB, 150mM NaCl, pH 7.4. Normally 5% - 8% trehalose, mannitol and 0.01% Tween 80 are added as protectants before lyophilization. Please refer to the specific buffer information in the printed manual. |
| Reconstitution | Please refer to the printed manual for detailed information. |

Data



> 90 % as determined by reducing SDS-PAGE.

Background

Mouse SLAM family member 8/SLAMF8 is a single-pass type I membrane protein. It contains one Ig-like C2-type domain. SLAMF8 is expressed in lymphnode, spleen, thymus and bone marrow. The signaling lymphocyte activation molecule (SLAM) family includes homophilic and heterophilic receptors that modulate both adaptive and innate immune responses. These receptors share a common ectodomain organization: a membrane-proximal immunoglobulin constant domain and a membrane-distal immunoglobulin variable domain that is responsible for ligand recognition. SLAM family of receptors is expressed by a wide range of immune cells. Through their cytoplasmic domain, SLAM family receptors associate with SLAM-associated protein (SAP)-related molecules, a group of cytoplasmic adaptors composed almost exclusively of an SRC homology 2 domain. SLAM family receptors, in association with SAP family adaptors, have crucial roles during normal immune reactions in innate and adaptive immune cells. It may play a role in B-lineage commitment and/or modulation of signaling through the B-cell receptor.

For Research Use Only