

Recombinant Human AKT2/PKB beta Protein (His & GST Tag)

Catalog Number: PKSH030382

Note: Centrifuge before opening to ensure complete recovery of vial contents.

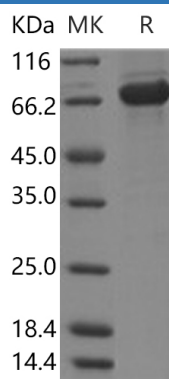
Description

Species	Human
Source	Baculovirus-Insect Cells-derived Human AKT2/PKB beta protein Met 1-Glu481, with an N-terminal His & GST
Mol_Mass	83.6 kDa
Accession	NP_001617.1
Bio-activity	Not validated for activity

Properties

Purity	> 90 % as determined by reducing SDS-PAGE.
Endotoxin	< 1.0 EU per µg of the protein as determined by the LAL method.
Storage	Store at < -20°C, stable for 6 months. Please minimize freeze-thaw cycles.
Shipping	This product is provided as liquid. It is shipped at frozen temperature with blue ice/gel packs. Upon receipt, store it immediately at < - 20°C.
Formulation	Supplied as sterile solution of 20 mM Tris, 500 mM NaCl, 10 % glycerol, pH 7.4
Reconstitution	Not Applicable

Data



> 90 % as determined by reducing SDS-PAGE.

Background

AKT2 (AKT Serine/Threonine Kinase 2) is a Protein Coding gene. Diseases associated with AKT2 include Hypoinsulinemic Hypoglycemia With Hemihypertrophy and Diabetes Mellitus, Noninsulin-Dependent. Among its related pathways are Constitutive Signaling by AKT1 E17K in Cancer and RANK Signaling in Osteoclasts. Gene Ontology (GO) annotations related to this gene include transferase activity, transferring phosphorus-containing groups and protein tyrosine kinase activity. An important paralog of this gene is AKT1.

For Research Use Only

Toll-free: 1-888-852-8623
Web: www.elabscience.com

Tel: 1-832-243-6086
Email: techsupport@elabscience.com

Fax: 1-832-243-6017