

(KO Validated) CAPG Polyclonal Antibody

catalog number: **E-AB-61646**

Note: Centrifuge before opening to ensure complete recovery of vial contents.

Description

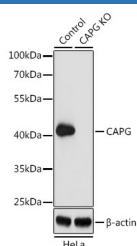
Reactivity	Human;Mouse;Rat
Immunogen	Recombinant fusion protein of human CAPG(NP_001738.2).
Host	Rabbit
Isotype	IgG
Purification	Affinity purification
Buffer	Phosphate buffered solution, pH 7.4, containing 0.05% stabilizer and 50% glycerol.

Applications

Recommended Dilution

WB	1:500-1:2000
IHC	1:50-1:200

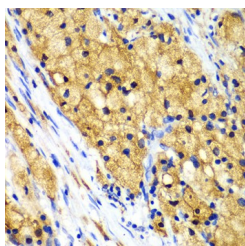
Data



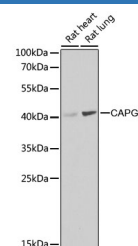
Western blot analysis of extracts from normal (control) and CAPG knockout (KO) HeLa cells using CAPG Polyclonal Antibody at dilution of 1:1000.

Observed-MW:38 kDa

Calculated-MW:36 kDa/38 kDa



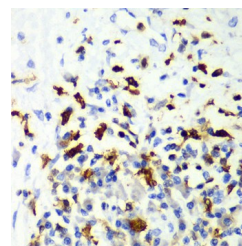
Immunohistochemistry of paraffin-embedded Human lung cancer using CAPG Polyclonal Antibody at dilution of 1:100 (40x lens).



Western blot analysis of extracts of various cell lines using CAPG Polyclonal Antibody at dilution of 1:1000.

Observed-MW:38 kDa

Calculated-MW:36 kDa/38 kDa



Immunohistochemistry of paraffin-embedded Human liver cancer using CAPG Polyclonal Antibody at dilution of 1:100 (40x lens).

Preparation & Storage

Storage	Store at -20°C Valid for 12 months. Avoid freeze / thaw cycles.
Shipping	The product is shipped with ice pack,upon receipt,store it immediately at the temperature recommended.

Background

For Research Use Only

This gene encodes a member of the gelsolin/villin family of actin-regulatory proteins. The encoded protein reversibly blocks the barbed ends of F-actin filaments in a Ca²⁺ and phosphoinositide-regulated manner, but does not sever preformed actin filaments. By capping the barbed ends of actin filaments, the encoded protein contributes to the control of actin-based motility in non-muscle cells. Alternatively spliced transcript variants have been observed for this gene.

For Research Use Only

Toll-free: 1-888-852-8623
Web: www.elabscience.com

Tel: 1-832-243-6086
Email: techsupport@elabscience.com

Fax: 1-832-243-6017

Rev. V1.7