

# Recombinant Human JAM-B/CD322 Protein (His Tag)



Catalog Number:PKSH032662

**Note:** Centrifuge before opening to ensure complete recovery of vial contents.

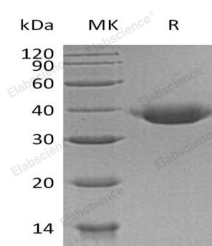
## Description

<b>Synonyms</b>	Junctional Adhesion Molecule B;JAM-B;Junctional Adhesion Molecule 2;JAM-2;Vascular Endothelial Junction-Associated Molecule;VE-JAM;CD322;JAM2;C21orf43;VEJAM
<b>Species</b>	Human
<b>Expression Host</b>	HEK293 Cells
<b>Sequence</b>	Phe29-Asn236
<b>Accession</b>	P57087
<b>Calculated Molecular Weight</b>	24.3 kDa
<b>Observed molecular weight</b>	35-39 kDa
<b>Tag</b>	C-His

## Properties

<b>Purity</b>	> 95 % as determined by reducing SDS-PAGE.
<b>Endotoxin</b>	< 1.0 EU per µg of the protein as determined by the LAL method.
<b>Storage</b>	Generally, lyophilized proteins are stable for up to 12 months when stored at -20 to -80°C. Reconstituted protein solution can be stored at 4-8°C for 2-7 days. Aliquots of reconstituted samples are stable at < -20°C for 3 months.
<b>Shipping</b>	This product is provided as lyophilized powder which is shipped with ice packs.
<b>Formulation</b>	Lyophilized from a 0.2 µm filtered solution of 20mM Tris-HCl, 150mM NaCl, pH 8.0. Normally 5 % - 8 % trehalose, mannitol and 0.01% Tween80 are added as protectants before lyophilization. Please refer to the specific buffer information in the print
<b>Reconstitution</b>	Please refer to the printed manual for detailed information.

## Data



> 95 % as determined by reducing SDS-PAGE.

## Background

Junctional Adhesion Molecule B (JAM-B) is a single-pass type I membrane protein that belongs to the junctional adhesion molecules family. JAM-B includes a signal sequence (aa 1-28); an extracellular region (aa 29-238) with one Ig-like C2-type domain and one Ig-like V-type domain; a transmembrane segment (aa 239-259); and a cytoplasmic domain (aa 260 - 298). JAMB is localized to the tight junctions between endothelial cells or epithelial cells. JAM-B is prominently expressed in the heart; placenta; lung; foreskin and lymph node. It is also present on the endothelia of other vessels. JAM-

## For Research Use Only

A Reliable Research Partner in Life Science and Medicine

Toll-free: 1-888-852-8623

Web: [www.elabscience.com](http://www.elabscience.com)

Tel: 1-832-243-6086

Email: [techsupport@elabscience.com](mailto:techsupport@elabscience.com)

Fax: 1-832-243-6017

# Recombinant Human JAM-B/CD322 Protein (His Tag)

Catalog Number:PKSH032662



B acts as an adhesive ligand for interacting with a variety of immune cell types and may play a role in lymphocyte homing to secondary lymphoid organs.

---

## For Research Use Only

A Reliable Research Partner in Life Science and Medicine

Toll-free: 1-888-852-8623

Tel: 1-832-243-6086

Fax: 1-832-243-6017

Web: [www.elabscience.com](http://www.elabscience.com)

Email: [techsupport@elabscience.com](mailto:techsupport@elabscience.com)