

## PE/Cyanine7 Anti-Mouse TCR $\beta$ Antibody[H57-597]

**Catalog Number:** E-AB-F1123H

**Note:** Centrifuge before opening to ensure complete recovery of vial contents.

### Description

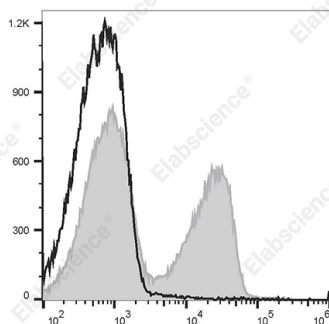
<b>Reactivity</b>	Mouse
<b>Host</b>	Armenian Hamster
<b>Isotype</b>	Armenian Hamster IgG
<b>Clone No.</b>	H57-597
<b>Isotype Control</b>	PE/Cyanine7 Armenian Hamster IgG Isotype Control[PIP] [Product E-AB-F09852H]
<b>Conjugation</b>	PE/Cyanine 7
<b>Conjugation Information</b>	PE/Cyanine7 is designed to be excited by the Blue (488 nm), Green (532 nm) and yellow-green (561 nm) lasers and detected using an optical filter centered near 775 nm (e.g., a 780/60 nm bandpass filter).
<b>Storage Buffer</b>	Phosphate buffered solution, pH 7.2, containing 0.09% stabilizer and 1% protein protectant.

### Applications

### Recommended usage

<b>FCM</b>	Each lot of this antibody is quality control tested by flow cytometric analysis. <b>The amount of the reagent is suggested to be used 5 <math>\mu</math>L of antibody per test (million cells in 100 <math>\mu</math>L staining volume or per 100 <math>\mu</math>L of whole blood).</b> Please check your vial before the experiment. Since applications vary, the appropriate dilutions must be determined for individual use.
------------	--

### Data



C57BL/6 murine splenocytes are stained with PE/Cyanine7 Anti-Mouse TCR $\beta$  Antibody[H57-597 (HB218)] (filled gray histogram) or PE/Cyanine7 Armenian Hamster IgG Isotype Control (empty black histogram).

### Preparation & Storage

<b>Storage</b>	Keep as concentrated solution. This product can be stored at 2-8°C for 12 months. Please protected from prolonged exposure to light and do not freeze.
<b>Shipping</b>	Ice bag

### Antigen Information

<b>Alternate Names</b>	TCR- $\beta$ -TCR;TCR- $\beta$ chain
<b>Gene ID</b>	21577

### For Research Use Only

## Background

T cell receptor (TCR) is a heterodimer consisting of an  $\alpha$  and a  $\beta$  chain (TCR  $\alpha/\beta$ ) or a  $\gamma$  and a  $\delta$  chain (TCR  $\gamma/\delta$ ). TCR- $\beta$  is a member of the immunoglobulin superfamily and a component of the CD3/TCR complex (along with TCR- $\alpha$ ). It is expressed on  $\alpha/\beta$  TCR-bearing T cells and thymocytes. The CD3/TCR complex plays a key role in antigen recognition, signal transduction, and T cell activation.

## For Research Use Only