

Recombinant TMEM173 Monoclonal Antibody

catalog number: **AN301084L**

Note: Centrifuge before opening to ensure complete recovery of vial contents.

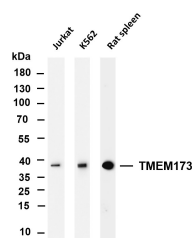
Description

Reactivity	Human;Mouse;Rat
Immunogen	Recombinant Human TMEM173 protein
Host	Rabbit
Isotype	IgG,k
Clone	B839
Purification	Protein A
Buffer	PBS, 50% glycerol, 0.05% Proclin 300, 0.05% protein protectant.

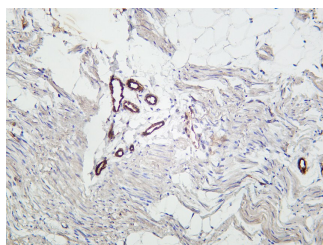
Applications Recommended Dilution

IHC	1:200-1000
WB	1:1000-5000
IF	1:200-1000
ELISA	1:5000-20000
IP	1:50-200

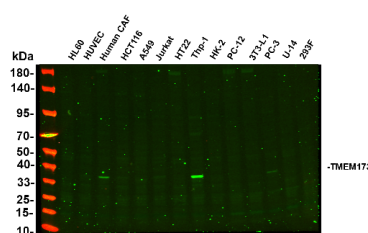
Data



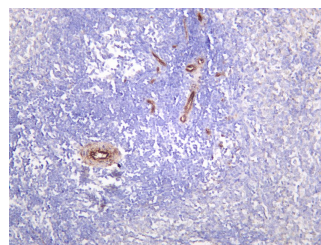
Various whole cell lysates were separated by 4-20% SDS-PAGE, and the membrane was blotted with anti-TMEM173 antibody. The HRP-conjugated Goat anti-Rabbit IgG(H + L) antibody was used to detect the antibody. Lane 1: Jurkat Lane 2: K562 Lane 3: Rat spleen Predicted band size: 42kDa Observed band size: 37kDa



Rat colon was stained with Anti-TMEM173 rabbit antibody



Various whole cell lysates were separated by 4-20% SDS-PAGE, and the primary antibody was used at 4°C, over night with a 1:2500 dilution. The Dylight 800-conjugated Goat anti-Rabbit antibody was used to detect the antibody. Lane1: HL60 Lane2: HUVEC Lane3: Human CAF Lane4: HCT116 Lane5: A549 Lane6: Jurkat Lane7: HT22 Lane8: THP-1 Lane9: HK-2 Lane10: PC-12 Lane11: 3T3-L1 Lane12: PC-3 Lane13: U-14 Lane14: 293F. Predicted band size: 42kDa Observed band size: 37kDa



Rat spleen was stained with Anti-TMEM173 rabbit antibody

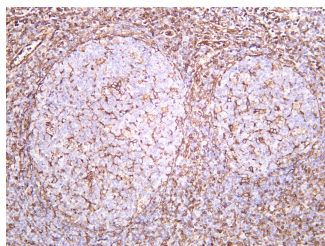
For Research Use Only

Toll-free: 1-888-852-8623
Web: www.elabscience.com

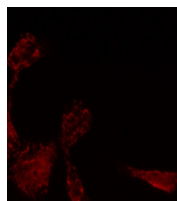
Tel: 1-832-243-6086
Email: techsupport@elabscience.com

Fax: 1-832-243-6017

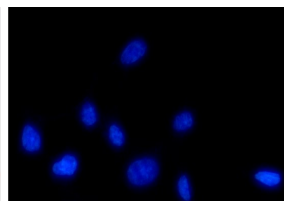
Rev. V1.2



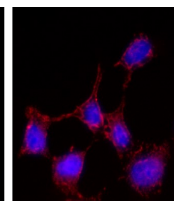
Human tonsil was stained with Anti-TMEM173 rabbit antibody



A



B



C

Immunofluorescence analysis of HEK293. Picture A: TMEM173 antibody (red). Picture B: DAPI (blue). Picture C: Merge of A+B

Preparation & Storage

Storage

Store at -20°C Valid for 12 months. Avoid freeze / thaw cycles.

Shipping

Ice bag

Background

This gene encodes a five transmembrane protein that functions as a major regulator of the innate immune response to viral and bacterial infections. The encoded protein is a pattern recognition receptor that detects cytosolic nucleic acids and transmits signals that activate type I interferon responses. The encoded protein has also been shown to play a role in apoptotic signaling by associating with type II major histocompatibility complex. Mutations in this gene are the cause of infantile-onset STING-associated vasculopathy. Alternate splicing results in multiple transcript variants.

For Research Use Only

Toll-free: 1-888-852-8623
Web: www.elabscience.com

Tel: 1-832-243-6086
Email: techsupport@elabscience.com

Fax: 1-832-243-6017

Rev. V1.2