

Recombinant REN1/Renin-1 Monoclonal Antibody

catalog number: AN300502P

Note: Centrifuge before opening to ensure complete recovery of vial contents.

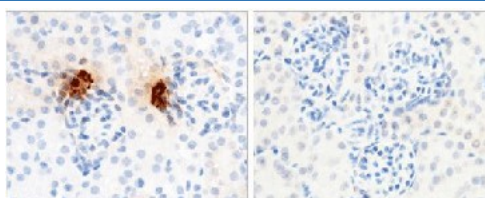
Description

Reactivity	Mouse
Immunogen	Recombinant Mouse REN1 protein
Host	Rabbit
Isotype	IgG
Clone	8C6
Purification	Protein A
Buffer	0.2 µm filtered solution in PBS

Applications Recommended Dilution

IHC-P	1:100-1:500
--------------	-------------

Data



REN1 Antibody

REN1 Antigen

Immunohistochemistry of paraffin-embedded mouse kidney using REN1/Renin-1 Monoclonal Antibody at dilution of 1:200. Positive staining was localized to juxtaglomerular cell.

The left panel: tissue incubated with primary antibody; The right panel: tissue incubated with the mixture of primary antibody and antigen (recombinant protein).

Preparation & Storage

Storage	This antibody can be stored at 2°C-8°C for one month without detectable loss of activity. Antibody products are stable for twelve months from date of receipt when stored at -20°C to -80°C. Preservative-Free. Avoid repeated freeze-thaw cycles.
Shipping	Ice bag

Background

Renin is a highly specific endopeptidase, whose only known function is to generate angiotensin I from angiotensinogen in the plasma, initiating a cascade of reactions that produce an elevation of blood pressure and increased sodium retention by the kidney.

For Research Use Only