

Recombinant Human NPDC-1/NPDC1 Protein (His Tag)

Catalog Number: PKSH032822

Note: Centrifuge before opening to ensure complete recovery of vial contents.

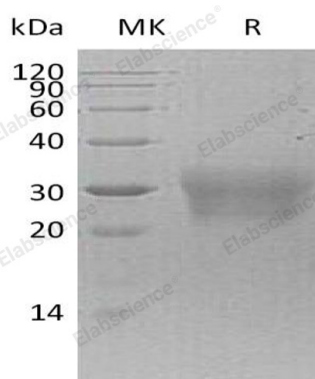
Description

Species	Human
Source	HEK293 Cells-derived Human NPDC-1;NPDC1 protein Gly35-Asp181, with an C-terminal His
Calculated MW	16.5 kDa
Observed MW	28-35 kDa
Accession	Q9NQX5
Bio-activity	Not validated for activity

Properties

Purity	> 95 % as determined by reducing SDS-PAGE.
Endotoxin	< 1.0 EU per µg of the protein as determined by the LAL method.
Storage	Generally, lyophilized proteins are stable for up to 12 months when stored at -20 to -80 °C. Reconstituted protein solution can be stored at 4-8°C for 2-7 days. Aliquots of reconstituted samples are stable at < -20°C for 3 months.
Shipping	This product is provided as lyophilized powder which is shipped with ice packs.
Formulation	Lyophilized from a 0.2 µm filtered solution of 20mM Tris-HCl, 150mM NaCl, pH 8.0. Normally 5% - 8% trehalose, mannitol and 0.01% Tween 80 are added as protectants before lyophilization.
	Please refer to the specific buffer information in the printed manual.
Reconstitution	Please refer to the printed manual for detailed information.

Data



> 95 % as determined by reducing SDS-PAGE.

Background

Neural proliferation differentiation and control protein 1(NPDC1) is a protein that in humans is encoded by the NPDC1 gene. It is a single-pass membrane protein and belongs to the NPDC1/cab-1 family. The protein strongly expressed in adult brain and especially in hippocampus; frontal lobe and temporal lobe. The protein suppresses oncogenic transformation in neural and non-neural cells and down-regulates neural cell proliferation and it might be involved in transcriptional regulation.

For Research Use Only