

PE Anti-Human CD80 Antibody[2F4]

Catalog Number: E-AB-F1365D

Note: Centrifuge before opening to ensure complete recovery of vial contents.

Description

Reactivity	Human
Host	Mouse
Isotype	Mouse IgG1, κ
Clone No.	2F4
Isotype Control	PE Mouse IgG1, κ Isotype Control[MOPC-21] [Product E-AB-F09792D]
Conjugation	PE
Conjugation Information	PE is designed to be excited by the Blue (488 nm), Green (532 nm) and Yellow-Green (561 nm) lasers and detected using an optical filter centered near 575 nm (e.g., a 585/42 nm bandpass filter).
Storage Buffer	Phosphate buffered solution, pH 7.2, containing 0.09% sodium azide and 1% BSA.

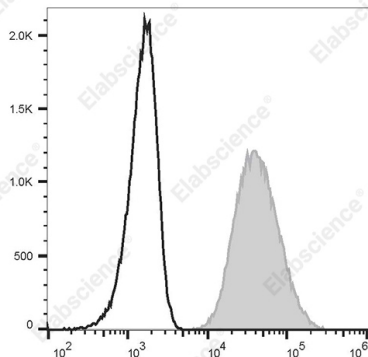
Applications

Recommended usage

FCM

Each lot of this antibody is quality control tested by flow cytometric analysis. **The amount of the reagent is suggested to be used 5 μL of antibody per test (million cells in 100 μL staining volume or per 100 μL of whole blood).** Please check your vial before the experiment. Since applications vary, the appropriate dilutions must be determined for individual use.

Data



Staining of the Raji cell line with PE Anti-Human CD80 Antibody[2F4] (filled gray histogram) or PE Mouse IgG1, κ Isotype Control (empty black histogram). Total viable cells were used for analysis.

Preparation & Storage

Storage	Keep as concentrated solution. This product can be stored at 2-8°C for 12 months. Please protected from prolonged exposure to light and do not freeze.
Shipping	Ice bag

Antigen Information

Alternate Names	B7-1;B7;BB1
Uniprot ID	P33681
Gene ID	941

For Research Use Only

Background

CD80, also known as B7-1, B7, and BB1, is a 60 kD single chain type I glycoprotein belonging to the immunoglobulin superfamily. CD80 is expressed on activated B and T cells, macrophages, and dendritic cells. CD80 binds to CD28 and CD152 (CTLA-4). Along with CD86, CD80 plays a critical role in regulation of T cell activation. The interaction of CD80 with CD28 provides a potent costimulatory signal for T cell activation through the CD3 complex, while its interaction with CTLA-4 provides an inhibitory signal for T cell activation.