

## Purified Anti-Human CD1a Antibody[Ab571]

**Catalog Number:** GF13730P

**Note:** Centrifuge before opening to ensure complete recovery of vial contents.

### Description

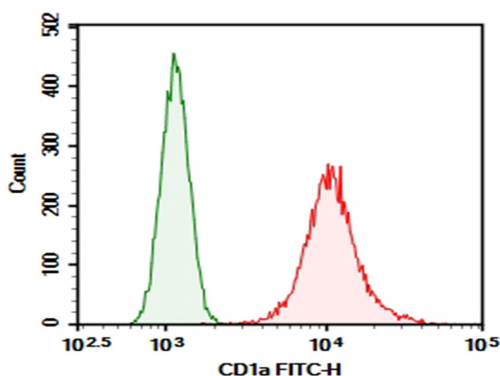
<b>Reactivity</b>	Human
<b>Immunogen</b>	Recombinant Human CD1a protein
<b>Host</b>	Mouse
<b>Isotype</b>	Mouse IgG1, $\kappa$
<b>Clone</b>	Ab571
<b>Purification</b>	>98%, Protein A/G purified
<b>Conjugation</b>	Unconjugated
<b>Buffer</b>	Phosphate-buffered solution, pH 7.2, containing 0.05% non-protein stabilizer. Dialyze to completely remove the stabilizer prior to labeling.

### Applications

### Recommended Dilution

<b>FCM</b>	2 $\mu\text{g/mL}$ ( $0.5 \times 10^6$ - $1 \times 10^6$ cells)
------------	---

### Data



Molt-4 were stained with 0.2  $\mu\text{g}$  Purified Anti-Human CD1a Antibody[Ab571] (Right) and 0.2  $\mu\text{g}$  Mouse IgG1,  $\kappa$  Isotype Control (Left), followed by FITC-conjugated Goat Anti-Mouse IgG Secondary Antibody.

### Preparation & Storage

<b>Storage</b>	Store at 4°C valid for 12 months or -20°C valid for long term storage, avoid freeze / thaw cycles.
<b>Shipping</b>	Ice bag

### Background

CD1a is a 49 kDa transmembrane glycoprotein in the CD1 family of glycolipid antigen-presenting MHC-like molecules. CD1a contains one Ig-like domain in its extracellular region. It is expressed by most nonhuman mammals but not by mice or rats. Complexes of CD1a with beta 2-microglobulin and endogenous glycolipids are constitutively expressed on antigen presenting cells, cortical thymocytes, and Langerhans cells. CD1a is a target of autoreactive Th22 helper T cells in the skin.