

Recombinant Human Leukocyte Ig-Like Receptor A5/LILRA5/CD85f (C-6His-Avi) Biotinylated

Catalog Number: PKSH034006

Note: Centrifuge before opening to ensure complete recovery of vial contents.

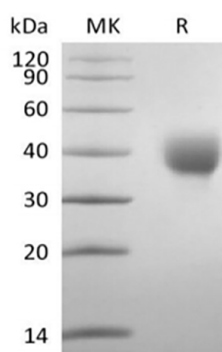
Description

Species	Human
Source	HEK293 Cells-derived Human LILRA5;CD85f protein Gly42-Arg268, with an C-terminal His & Avi
Calculated MW	27.9 kDa
Observed MW	35-45 kDa
Accession	A6NI73
Bio-activity	Not validated for activity

Properties

Purity	> 95 % as determined by reducing SDS-PAGE.
Endotoxin	< 1.0 EU per µg of the protein as determined by the LAL method.
Storage	Generally, lyophilized proteins are stable for up to 12 months when stored at -20 to -80 °C. Reconstituted protein solution can be stored at 4-8°C for 2-7 days. Aliquots of reconstituted samples are stable at < -20°C for 3 months.
Shipping	This product is provided as lyophilized powder which is shipped with ice packs.
Formulation	Lyophilized from a 0.2 µm filtered solution of PBS, pH 7.4. Normally 5% - 8% trehalose, mannitol and 0.01% Tween 80 are added as protectants before lyophilization. Please refer to the specific buffer information in the printed manual.
Reconstitution	Please refer to the printed manual for detailed information.

Data



> 95 % as determined by reducing SDS-PAGE.

Background

For Research Use Only

Leukocyte Immunoglobulin-like Receptor Subfamily A Member 5 (LILRA5) is a member of the leukocyte immunoglobulin-like receptors (LILR), comprise a family of activating and inhibitory type immunoreceptors. LILRA5 consists of a 227 amino acid (aa) extracellular domain (ECD), a 21 aa transmembrane segment, and a 10 aa cytoplasmic tail. The ECD contains two Ig-like domains and the transmembrane segment contains a positively charged aspartic acid residue which may mediate its association with the signaling molecule, FcR common gamma chain. LILRA5 is expressed by monocytes, macrophages, and neutrophils. Cross-linking of LILRA5 on monocytes induces the expression of pro-inflammatory cytokines (IL-1beta, IL-6, TNF-alpha) as well as the anti-inflammatory IL-10. It can be detected in tissues of the hematopoietic system, including bone marrow, spleen, lymph node and peripheral leukocytes. Crosslink of ILT-11 on the surface of monocytes has been shown to induce calcium flux and secretion of several proinflammatory cytokines, which suggests the roles of this protein in triggering innate immune responses.