

## METAP1D Polyclonal Antibody

**catalog number: E-AB-18367**

**Note:** Centrifuge before opening to ensure complete recovery of vial contents.

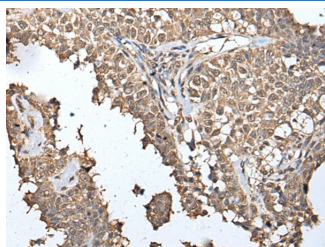
### Description

<b>Reactivity</b>	Human;Mouse
<b>Immunogen</b>	Fusion protein of human METAP1D
<b>Host</b>	Rabbit
<b>Isotype</b>	IgG
<b>Purification</b>	Antigen affinity purification
<b>Buffer</b>	Phosphate buffered solution, pH 7.4, containing 0.05% stabilizer and 50% glycerol.

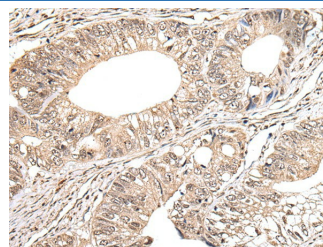
### Applications

Applications	Recommended Dilution
IHC	1:30-1:150

### Data



Immunohistochemistry of paraffin-embedded Human ovarian cancer tissue using METAP1D Polyclonal Antibody at dilution of 1:40(×200)



Immunohistochemistry of paraffin-embedded Human colorectal cancer tissue using METAP1D Polyclonal Antibody at dilution of 1:40(×200)

### Preparation & Storage

<b>Storage</b>	Store at -20°C Valid for 12 months. Avoid freeze / thaw cycles.
<b>Shipping</b>	The product is shipped with ice pack, upon receipt, store it immediately at the temperature recommended.

### Background

The N-terminal methionine excision pathway is an essential process in which the N-terminal methionine is removed from many proteins, thus facilitating subsequent protein modification. In mitochondria, enzymes that catalyze this reaction are called methionine aminopeptidases (MetAps, or MAPs; EC 3.4.11.18) (Serero et al., 2003 [PubMed 14532271])

### For Research Use Only