

## SLC16A7 Polyclonal Antibody

catalog number: **E-AB-15770**

**Note:** Centrifuge before opening to ensure complete recovery of vial contents.

### Description

<b>Reactivity</b>	Human
<b>Immunogen</b>	Synthetic peptide of human SLC16A7
<b>Host</b>	Rabbit
<b>Isotype</b>	IgG
<b>Purification</b>	Affinity purification
<b>Buffer</b>	Phosphate buffered solution, pH 7.4, containing 0.05% stabilizer and 50% glycerol.

### Applications

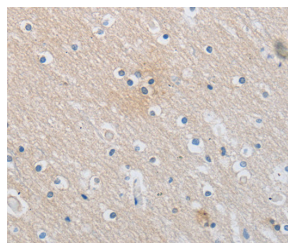
Applications	Recommended Dilution
<b>WB</b>	1:500-1:2000
<b>IHC</b>	1:15-1:50

### Data

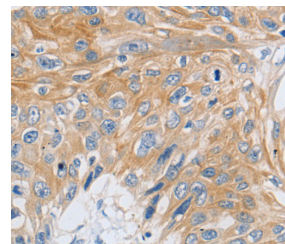


Western Blot analysis of A549 cell using SLC16A7 Polyclonal Antibody at dilution of 1:450

**Calculated-MW:52 kDa**



Immunohistochemistry of paraffin-embedded Human brain using SLC16A7 Polyclonal Antibody at dilution of 1:30



Immunohistochemistry of paraffin-embedded Human esophagus cancer using SLC16A7 Polyclonal Antibody at dilution of 1:30

### Preparation & Storage

<b>Storage</b>	Store at -20°C Valid for 12 months. Avoid freeze / thaw cycles.
<b>Shipping</b>	The product is shipped with ice pack, upon receipt, store it immediately at the temperature recommended.

### Background

This gene is a member of the monocarboxylate transporter family. Members in this family transport metabolites, such as lactate, pyruvate, and ketone bodies. The protein encoded by this gene catalyzes the proton-linked transport of monocarboxylates and has the highest affinity for pyruvate. This protein has been reported to be more highly expressed in prostate and colorectal cancer specimens when compared to control specimens. Alternative splicing results in multiple transcript variants.

### For Research Use Only