

PLXND1 Polyclonal Antibody

catalog number: E-AB-16724

Note: Centrifuge before opening to ensure complete recovery of vial contents.

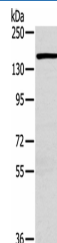
Description

Reactivity	Human;Mouse
Immunogen	Synthetic peptide of human PLXND1
Host	Rabbit
Isotype	IgG
Purification	Affinity purification
Buffer	Phosphate buffered solution, pH 7.4, containing 0.05% stabilizer and 50% glycerol.

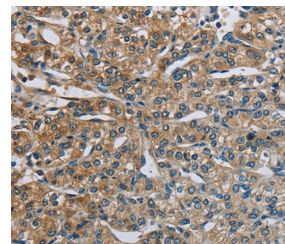
Applications

Applications	Recommended Dilution
WB	1:200-1:1000
IHC	1:25-1:100

Data



Western Blot analysis of Hbmec cell using PLXND1 Polyclonal Antibody at dilution of 1:200
Calculated-MW:212 kDa



Immunohistochemistry of paraffin-embedded Human prostate cancer using PLXND1 Polyclonal Antibody at dilution of 1:40

Preparation & Storage

Storage	Store at -20°C Valid for 12 months. Avoid freeze / thaw cycles.
Shipping	The product is shipped with ice pack, upon receipt, store it immediately at the temperature recommended.

Background

Cell surface receptor for SEMA4A and for class 3 semaphorins, such as SEMA3A, SEMA3C and SEMA3E. Plays an important role in cell-cell signaling, and in regulating the migration of a wide spectrum of cell types. Regulates the migration of thymocytes in the medulla. Regulates endothelial cell migration. Plays an important role in ensuring the specificity of synapse formation. Required for normal development of the heart and vasculature. By similarity. Mediates anti-angiogenic signaling in response to SEMA3E.

For Research Use Only