

## Purified Anti-Human CD3E Antibody[CRIS-7]

catalog number: **AN003740P**

**Note:** Centrifuge before opening to ensure complete recovery of vial contents.

### Description

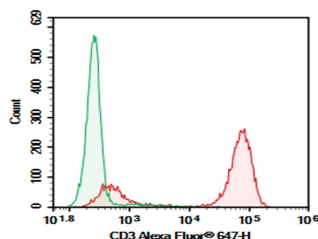
<b>Reactivity</b>	Human
<b>Immunogen</b>	Recombinant Human CD3E protein
<b>Host</b>	Mouse
<b>Isotype</b>	Mouse IgG2a, $\kappa$
<b>Clone</b>	CRIS-7
<b>Purification</b>	>98%, Protein A/G purified
<b>Buffer</b>	Phosphate-buffered solution, pH 7.2, containing 0.05% non-protein stabilizer. Dialyze to completely remove the stabilizer prior to labeling.

### Applications

### Recommended Dilution

<b>FCM</b>	2 $\mu\text{g/mL}$ ( $1 \times 10^5$ - $5 \times 10^5$ cells)
------------	---

### Data



Human peripheral blood lymphocytes were stained with 0.2  $\mu\text{g}$  Purified Anti-Human CD3E Antibody[CRIS-7] (Right) and 0.2  $\mu\text{g}$  mouse IgG2a, $\kappa$  Isotype Control (Left), followed by AF647-conjugated goat Anti-mouse IgG Secondary Antibody.

### Preparation & Storage

<b>Storage</b>	Store at 4°C valid for 12 months or -20°C valid for long term storage, avoid freeze / thaw cycles.
<b>Shipping</b>	Ice bag

### Background

The CD3 $\epsilon$  chain of the CD3-TCR complex is a type I membrane protein that undergoes conformational change following ligation of the TCR-CD3 complex. This conformational change leads to exposure of the proline rich sequence in CD3 $\epsilon$  and results in recruitment of Nck. It is expressed by all mature T cells and forms a heteromeric complex with CD3  $\alpha/\beta$  or  $\gamma/\delta$  and  $\zeta$  chains. It is important in T cell development, and deficiency of this gene has been associated with severe immunodeficiency.

### For Research Use Only