

GLYR1 Polyclonal Antibody

catalog number: E-AB-13272

Note: Centrifuge before opening to ensure complete recovery of vial contents.

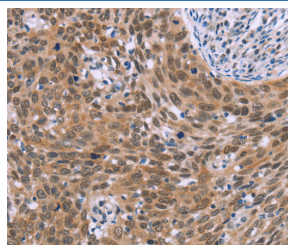
Description

Reactivity	Human;Mouse;Rat
Immunogen	Synthetic peptide of human GLYR1
Host	Rabbit
Isotype	IgG
Purification	Affinity purification
Buffer	Phosphate buffered solution, pH 7.4, containing 0.05% stabilizer and 50% glycerol.

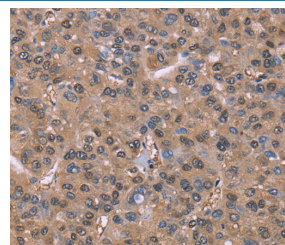
Applications Recommended Dilution

IHC	1:50-1:200
------------	------------

Data



Immunohistochemistry of paraffin-embedded Human cervical cancer tissue using GLYR1 Polyclonal Antibody at dilution 1:30



Immunohistochemistry of paraffin-embedded Human liver cancer tissue using GLYR1 Polyclonal Antibody at dilution 1:30

Preparation & Storage

Storage	Store at -20°C Valid for 12 months. Avoid freeze / thaw cycles.
Shipping	The product is shipped with ice pack, upon receipt, store it immediately at the temperature recommended.

Background

GLYR1 encodes a deduced 553-amino acid protein with a molecular mass of 60.5 kD. GLYR1 contains 2 nuclear localization signals, an N-terminal PWWP domain and an AT-hook, and a C-terminal NAD-binding domain. Western blot, RT-PCR, and immunohistochemistry showed that GLYR1 localizes to the nucleus in a variety of cell lines, with robust expression in mouse macrophage RAW274.7 cells.

For Research Use Only