

Recombinant Human CTRL Protein (His Tag)

Catalog Number: PKSH032253

Note: Centrifuge before opening to ensure complete recovery of vial contents.

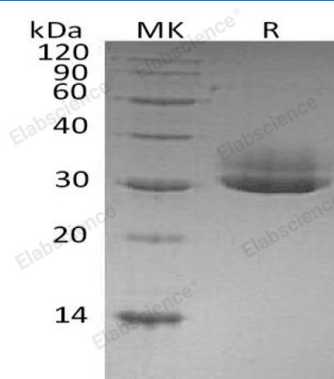
Description

Species	Human
Source	HEK293 Cells-derived Human CTRL protein Cys19-Asn264, with an C-terminal His
Calculated MW	27.2 kDa
Observed MW	28-38 kDa
Accession	P40313
Bio-activity	Not validated for activity

Properties

Purity	> 95 % as determined by reducing SDS-PAGE.
Concentration	Subject to label value.
Endotoxin	< 1.0 EU per µg of the protein as determined by the LAL method.
Storage	Store at < -20°C, stable for 6 months. Please minimize freeze-thaw cycles.
Shipping	This product is provided as liquid. It is shipped at frozen temperature with blue ice/gel packs. Upon receipt, store it immediately at < -20°C.
Formulation	Supplied as a 0.2 µm filtered solution of 20mM Tris-HCl, 150mM NaCl, 10% Glycerol, pH 8.0.

Data



> 95 % as determined by reducing SDS-PAGE.

Background

Chymotrypsin-Like Protease CTRL-1 is a protease that belongs to the peptidase S1 family. Human CTRL-1 is synthesized as a 264 amino acid (aa) precursor that contains an 18 aa signal sequence, 15 aa activation peptide and a 231 aa mature chain. CTRL-1 Contains 1 peptidase S1 domain. It has many molecular functions, such as hydrolase, protease, and serine protease. CTRL-1 plays a role in digest and hydrolyze proteins in biological process.

For Research Use Only

Toll-free: 1-888-852-8623
Web: www.elabscience.com

Tel: 1-832-243-6086
Email: techsupport@elabscience.com

Fax: 1-832-243-6017

Rev. V3.6