

Heme Oxygenase 1 Polyclonal Antibody

catalog number: **E-AB-93300**

Note: Centrifuge before opening to ensure complete recovery of vial contents.

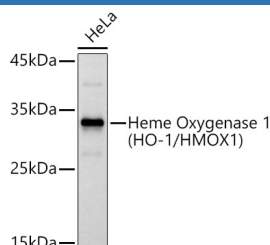
Description

Reactivity	Human;Mouse;Rat
Immunogen	Recombinant fusion protein of human Heme Oxygenase 1
Host	Rabbit
Isotype	IgG
Purification	Affinity purification
Buffer	Phosphate buffered solution, pH 7.4, containing 0.05% stabilizer and 50% glycerol.

Applications

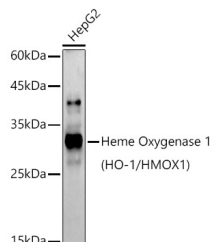
WB	1:500-1:2000
IF	1:50-1:200

Data



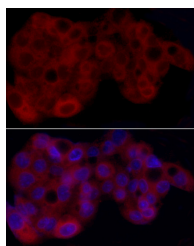
Western blot analysis of extracts of HeLa cells using Heme Oxygenase 1 Polyclonal Antibody at 1:1000 dilution.

Observed-MV:33 kDa
Calculated-MV:32 kDa

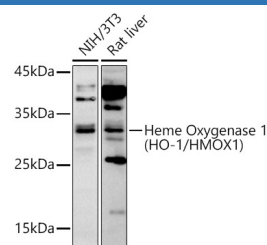


Western blot analysis of extracts of HepG2 cells using Heme Oxygenase 1 Polyclonal Antibody at 1:1000 dilution.

Observed-MV:33 kDa
Calculated-MV:32 kDa

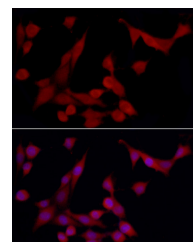


Immunofluorescence analysis of HepG2 using Heme Oxygenase 1 Polyclonal Antibody at dilution of 1 : 50 (40x lens). Blue: DAPI for nuclear staining.

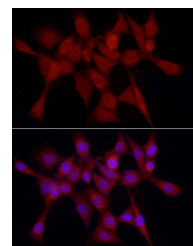


Western blot analysis of extracts of various cell lines using Heme Oxygenase 1 Polyclonal Antibody at 1:1000 dilution.

Observed-MV:33 kDa
Calculated-MV:32 kDa



Immunofluorescence analysis of PC-12 using Heme Oxygenase 1 Polyclonal Antibody at dilution of 1 : 50 (40x lens). Blue: DAPI for nuclear staining.



Immunofluorescence analysis of NIH-3T3 using Heme Oxygenase 1 Polyclonal Antibody at dilution of 1 : 50 (40x lens). Blue: DAPI for nuclear staining.

For Research Use Only

Preparation & Storage

Storage

Store at -20°C Valid for 12 months. Avoid freeze / thaw cycles.

Shipping

The product is shipped with ice pack, upon receipt, store it immediately at the temperature recommended.

Background

Heme oxygenase, an essential enzyme in heme catabolism, cleaves heme to form biliverdin, which is subsequently converted to bilirubin by biliverdin reductase, and carbon monoxide, a putative neurotransmitter. Heme oxygenase activity is induced by its substrate heme and by various nonheme substances. Heme oxygenase occurs as 2 isozymes, an inducible heme oxygenase-1 and a constitutive heme oxygenase-2. HMOX1 and HMOX2 belong to the heme oxygenase family.

For Research Use Only