

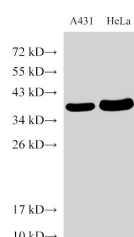
## GAPDH Polyclonal Antibody

catalog number: E-AB-40337

**Note:** Centrifuge before opening to ensure complete recovery of vial contents.

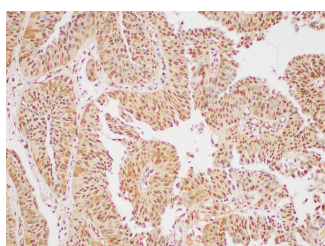
Description	
Reactivity	Human;Mouse;Rat
Immunogen	Recombinant Zebrafish Glyceraldehyde-3-phosphate dehydrogenase protein
Host	Rabbit
Isotype	IgG
Purification	Antigen Affinity Purification
Conjugation	Unconjugated
Buffer	PBS with 0.05% Proclin300, 1% protective protein and 50% glycerol, pH7.4
Applications	Recommended Dilution
WB	1:3000-1:6000
IHC	1:300-1:500

## Data

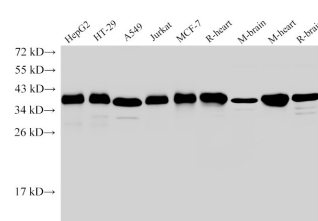
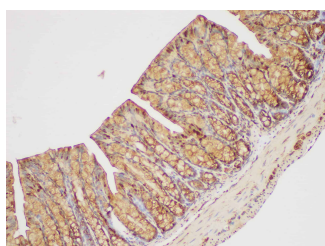


Western Blot analysis of A431 and HeLa cells using GAPDH Polyclonal Antibody at dilution of 1:5000

**Observed-MW:35 kDa**  
**Calculated-MW:35 kDa**

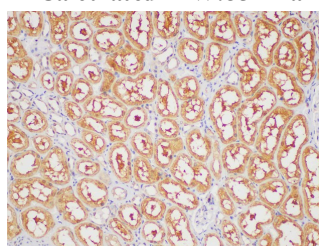


Immunohistochemistry of paraffin-embedded Human bladder cancer using GAPDH Polyclonal Antibody at dilution of 1:400

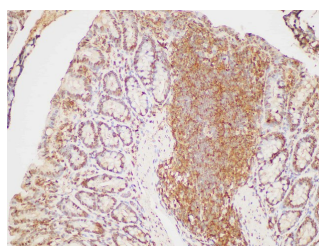


Western Blot analysis of HepG2, HT-29, A549, Jurkat, MCF-7, Rat heart, Mouse brain, Mouse heart and Rat brain using GAPDH Polyclonal Antibody at dilution of 1:5000

**Observed-MW:35 kDa**  
**Calculated-MW:35 kDa**



Immunohistochemistry of paraffin-embedded Human kidney using GAPDH Polyclonal Antibody at dilution of 1:400



Immunohistochemistry of paraffin-embedded Mouse colon  
using GAPDH Polyclonal Antibody at dilution of 1:400

Immunohistochemistry of paraffin-embedded Rat colon  
using GAPDH Polyclonal Antibody at dilution of 1:400

## Preparation & Storage

**Storage**

Store at -20°C Valid for 12 months. Avoid freeze / thaw cycles.

**Shipping**

The product is shipped with ice pack, upon receipt, store it immediately at the temperature recommended.

## Background

Glyceraldehyde-3-phosphate dehydrogenase (GAPDH) catalyzes the phosphorylation of glyceraldehyde-3-phosphate during glycolysis. GAPDH participates in nuclear events including transcription, binding RNA, RNA transportation, DNA replication, DNA repair and apoptosis. Being stably and constitutively expressed at high levels in most tissues and cells, GAPDH is considered a housekeeping protein. It was widely used as a control for RT-PCR and also loading control in electrophoresis and Western blotting. GAPDH is normally expressed in cellular cytoplasm or membrane, but can occasionally translocate to the nucleus post modification such as S-nitrosylation.