

ZIC5 Polyclonal Antibody

catalog number: E-AB-53239

Note: Centrifuge before opening to ensure complete recovery of vial contents.

Description

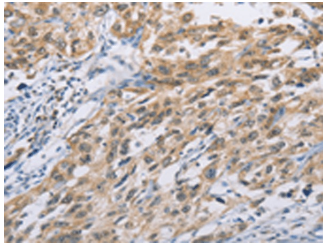
| | |
|---------------------|------------------------------------------------------------------------------------|
| Reactivity | Human;Mouse |
| Immunogen | Synthetic peptide of human ZIC5 |
| Host | Rabbit |
| Isotype | IgG |
| Purification | Antigen affinity purification |
| Conjugation | Unconjugated |
| buffer | Phosphate buffered solution, pH 7.4, containing 0.05% stabilizer and 50% glycerol. |

Applications

Recommended Dilution

| | |
|------------|-------------|
| IHC | 1:100-1:300 |
|------------|-------------|

Data



Immunohistochemistry of paraffin-embedded Human esophagus cancer tissue using ZIC5 Polyclonal Antibody at dilution of 1:100($\times 200$)

Preparation & Storage

| | |
|-----------------|----------------------------------------------------------------------------------------------------------|
| Storage | Store at -20°C Valid for 12 months. Avoid freeze / thaw cycles. |
| Shipping | The product is shipped with ice pack, upon receipt, store it immediately at the temperature recommended. |

Background

This gene encodes a member of the ZIC family of C2H2-type zinc finger proteins. Members of this family are important during development, and have been associated X-linked visceral heterotaxy and holoprosencephaly type 5. This gene is closely linked to a gene encoding zinc finger protein of the cerebellum 2, a related family member on chromosome 13.

For Research Use Only