

Recombinant Human CADM4/IGSF4C/NECL-4 Protein (Fc Tag)



Catalog Number: PKSH030509

Note: Centrifuge before opening to ensure complete recovery of vial contents.

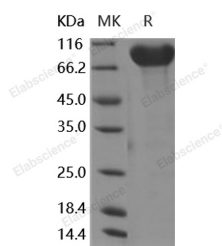
Description

Synonyms	IGSF4C; Necl-4; NECL4; synCAM4; TSLL2
Species	Human
Expression Host	HEK293 Cells
Sequence	Met 1-Tyr323
Accession	NP_660339.1
Calculated Molecular Weight	60.1 kDa
Tag	C-hFc

Properties

Purity	> 95 % as determined by reducing SDS-PAGE.
Endotoxin	< 1.0 EU per µg of the protein as determined by the LAL method.
Storage	Generally, lyophilized proteins are stable for up to 12 months when stored at -20 to -80°C. Reconstituted protein solution can be stored at 4-8°C for 2-7 days. Aliquots of reconstituted samples are stable at < -20°C for 3 months.
Shipping	This product is provided as lyophilized powder which is shipped with ice packs.
Formulation	Lyophilized from sterile PBS, pH 7.4 Normally 5 % - 8 % trehalose, mannitol and 0.01% Tween80 are added as protectants before lyophilization. Please refer to the specific buffer information in the printed manual.
Reconstitution	Please refer to the printed manual for detailed information.

Data



> 95 % as determined by reducing SDS-PAGE.

Background

Immunoglobulin superfamily member 4C (IGSF4C), also known as CADM4 or NECL-4, is an immunoglobulin (Ig) superfamily molecule showing significant homology with a lung tumor suppressor, TSLC1. CADM4/IGSF4C/NECL-4 protein is mainly expressed in the kidney, bladder, and prostate in addition to the brain. Experiments have reported the biological significance of CADM4/IGSF4C/NECL-4 in the urinary tissues. An immunohistochemical study reveals that CADM4 is expressed at the cell-cell attachment sites in the renal tubules, the transitional epithelia of the bladder, and the glandular epithelia of the prostate. IGSF4-immunoreactivity (IR) was observed diffusely in the telencephalic wall, whereas it became rather confined to the subplate, the cortical plate and the subventricular zone as the development proceeded. IGSF4-IR gradually decreased after birth and disappeared in adulthood. IGSF4 remained at low levels throughout embryonic stage, whereas it increased after birth. These spatiotemporal patterns of the expression suggest that IGSF4 plays crucial roles in the development of both telencephalon and cerebellum. CADM4/IGSF4C/NECL-4 is

For Research Use Only

A Reliable Research Partner in Life Science and Medicine

Toll-free: 1-888-852-8623

Web: www.elabscience.com

Tel: 1-832-243-6086

Email: techsupport@elabscience.com

Fax: 1-832-243-6017

Recombinant Human CADM4/IGSF4C/NECL-4 Protein (Fc Tag)



Catalog Number: PKSH030509

ectopically expressed in adult T-cell leukemia (ATL) cells, providing not only a diagnostic marker for ATL, but also a possible therapeutic target against its invasion. The distinct roles of CADM4/IGSF4C/NECL-4 in the oncogenesis of carcinomas and ATL could be due to tissue-specific differences in the downstream cascades, and is a novel concept with respect to cell adhesion in human oncogenesis.

For Research Use Only

A Reliable Research Partner in Life Science and Medicine

Toll-free: 1-888-852-8623

Web: www.elabscience.com

Tel: 1-832-243-6086

Email: techsupport@elabscience.com

Fax: 1-832-243-6017