

beta Tubulin Monoclonal Antibody

catalog number: E-AB-48019

Note: Centrifuge before opening to ensure complete recovery of vial contents.

Description

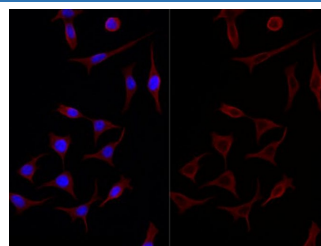
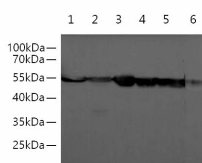
| | |
|---------------------|--|
| Reactivity | Human;Mouse;E.coli;Scallop;Zebrafish |
| Immunogen | Recombinant human TUBB protein |
| Host | Mouse |
| Isotype | IgG2a |
| Clone | 3A7 |
| Purification | Protein A/G Purification |
| Conjugation | Unconjugated |
| Buffer | PBS with 0.05% Proclin300, 1% protective protein and 50% glycerol, pH7.4 |

Applications

Recommended Dilution

| | |
|-----------|--------------|
| WB | 1:5000-10000 |
| IF | 1:2000-4000 |

Data



Western blotting with anti-Beta Tubulin monoclonal antibody at dilution of 1:5000. Lane 1: Hela cell lysates, Lane 2: Caco-2 cell lysates, Lane 3: HT-29 cell lysates, Lane 4: NIH/3T3 cell lysates, Lane 5: Raw264.7 cell lysates, Lane 6: Rat liver

Immunofluorescent analysis of HEK293 cells with anti-beta Tubulin monoclonal antibody at dilution of 1:4000.

Observed-MW:55 kDa

Calculated-MW:55 kDa

Preparation & Storage

| | |
|-----------------|--|
| Storage | Store at -20°C Valid for 12 months. Avoid freeze / thaw cycles. |
| Shipping | The product is shipped with ice pack, upon receipt, store it immediately at the temperature recommended. |

Background

In eukaryotes there are six members of the tubulin superfamily. α - and β -tubulins polymerize into microtubules, a major component of the eukaryotic cytoskeleton. Microtubules function in many essential cellular processes, including mitosis. Both α and β tubulins have a mass of around 50 kDa. Tubulin was long thought to be specific to eukaryotes. Beta-tubulin gene is commonly used as a loading control for western blot.