

## Elab Fluor® 700 Anti-Mouse Ly6G Antibody[1A8]

Catalog Number: E-AB-F1108M1

**Note:** Centrifuge before opening to ensure complete recovery of vial contents.

### Description

<b>Reactivity</b>	Mouse
<b>Host</b>	Rat
<b>Isotype</b>	Rat IgG2a, κ
<b>Clone No.</b>	1A8
<b>Isotype Control</b>	Elab Fluor® 700 Rat IgG2a, κ Isotype Control[2A3] [Product E-AB-F09832M1]
<b>Conjugation</b>	Elab Fluor® 700
<b>Conjugation Information</b>	Elab Fluor® 700 is designed to be excited by the Red laser (627-640 nm) and detected using an optical filter centered near 719 nm (e.g., a 725/40 nm bandpass filter).
<b>Storage Buffer</b>	Phosphate buffered solution, pH 7.2, containing 0.09% sodium azide and 1% BSA.

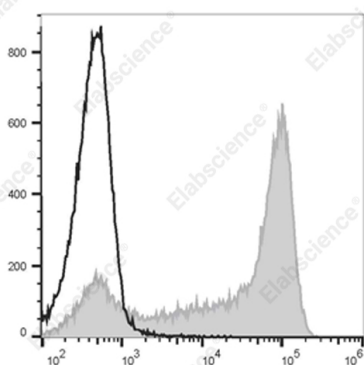
### Applications

### Recommended usage

#### FCM

Each lot of this antibody is quality control tested by flow cytometric analysis. **The amount of the reagent is suggested to be used 5 μL of antibody per test (million cells in 100 μL staining volume or per 100 μL of whole blood).** Please check your vial before the experiment. Since applications vary, the appropriate dilutions must be determined for individual use.

### Data



Staining of C57BL/6 murine bone marrow cells with Elab Fluor® 700 Anti-Mouse Ly6G Antibody[1A8] (filled gray histogram) or Elab Fluor® 700 Rat IgG2a, κ Isotype Control (empty black histogram). Total viable cells were used for analysis.

### Preparation & Storage

<b>Storage</b>	Keep as concentrated solution. This product can be stored at 2-8°C for 12 months. Please protected from prolonged exposure to light and do not freeze.
<b>Shipping</b>	Ice bag

### Antigen Information

<b>Alternate Names</b>	Ly-6G;Ly-6G.1;Ly6g;Lymphocyte antigen 6G
<b>Uniprot ID</b>	P35461
<b>Gene ID</b>	546644

### For Research Use Only

## Background

Lymphocyte antigen 6 complex, locus G (Ly-6G), a 21-25 kD GPI-anchored protein, is expressed on the majority of myeloid cells in bone marrow and peripheral granulocytes