

ENTPD1 Polyclonal Antibody

catalog number: E-AB-53347

Note: Centrifuge before opening to ensure complete recovery of vial contents.

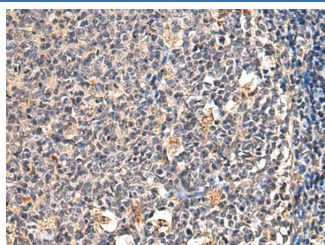
Description

| | |
|---------------------|--|
| Reactivity | Human;Mouse;Rat |
| Immunogen | Synthetic peptide of human ENTPD1 |
| Host | Rabbit |
| Isotype | IgG |
| Purification | Antigen affinity purification |
| Conjugation | Unconjugated |
| buffer | Phosphate buffered solution, pH 7.4, containing 0.05% stabilizer and 50% glycerol. |

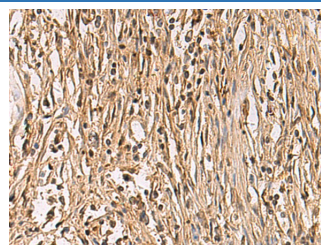
Applications

| Applications | Recommended Dilution |
|--------------|----------------------|
| IHC | 1:50-1:100 |

Data



Immunohistochemistry of paraffin-embedded Human tonsil tissue using ENTPD1 Polyclonal Antibody at dilution of 1:60(×200)



Immunohistochemistry of paraffin-embedded Human colorectal cancer tissue using ENTPD1 Polyclonal Antibody at dilution of 1:60(×200)

Preparation & Storage

| | |
|-----------------|--|
| Storage | Store at -20°C Valid for 12 months. Avoid freeze / thaw cycles. |
| Shipping | The product is shipped with ice pack,upon receipt,store it immediately at the temperature recommended. |

Background

ENTPD1(Ectonucleoside triphosphate diphosphohydrolase 1) is also named as CD39,NTPDase 1,Ecto-ATPDase 1 and belongs to the GDA1/CD39 NTPase family. In the nervous system,it can hydrolyze ATP and other nucleotides to regulate purinergic neurotransmission.It is a noncovalent tetrameric protein and that detergent inhibition of enzymatic activity is caused by dissociation of ectoapyrase tetramers into monomers.And it is a 70- to 100-kDa protein that is heavily N-glycosylated. This protein has 6 glycosylation sites and 3 isoforms(58 kDa,59 kDa and 34 kDa) produced by alternative splicing. The soluble isoform of CD39(38-478 amino acid) locates to the extracellular part and this antibody can recognize the soluble form of CD39 (38-478aa) molecule.

For Research Use Only