

## Recombinant Mouse CCL9/MIP-1-γ Protein

Catalog Number: PKSM040984

**Note:** Centrifuge before opening to ensure complete recovery of vial contents.

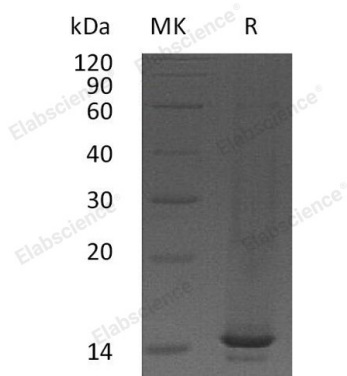
### Description

<b>Species</b>	Mouse
<b>Source</b>	E.coli-derived Mouse CCL9/MIP-1-γ protein Gln22-Gln122
<b>Calculated MW</b>	11.6 kDa
<b>Observed MW</b>	15 kDa
<b>Accession</b>	P51670
<b>Bio-activity</b>	Not validated for activity

### Properties

<b>Purity</b>	> 95 % as determined by reducing SDS-PAGE.
<b>Endotoxin</b>	< 1.0 EU per µg of the protein as determined by the LAL method.
<b>Storage</b>	Generally, lyophilized proteins are stable for up to 12 months when stored at -20 to -80 °C. Reconstituted protein solution can be stored at 4-8°C for 2-7 days. Aliquots of reconstituted samples are stable at < -20°C for 3 months.
<b>Shipping</b>	This product is provided as lyophilized powder which is shipped with ice packs.
<b>Formulation</b>	Lyophilized from a 0.2 µm filtered solution of 20mM Tris-HCl, 300mM NaCl, pH 8.0. Normally 5% - 8% trehalose, mannitol and 0.01% Tween 80 are added as protectants before lyophilization.
	Please refer to the specific buffer information in the printed manual.
<b>Reconstitution</b>	Please refer to the printed manual for detailed information.

### Data



> 95 % as determined by reducing SDS-PAGE.

### Background

C-C motif chemokine 9 (CCL9) is an 11 kDa, secreted, monomeric polypeptide that belongs to the beta (or CC) intercrine family of chemokines. It is expressed mainly in the liver, lung, and the thymus, although some expression has been detected in a wide variety of tissues except brain. Monokine has inflammatory, pyrogenic and chemokinetic properties. It circulates at high concentrations in the blood of healthy animals. Binding to a high-affinity receptor, it activates calcium release in neutrophils. It also inhibits colony formation of bone marrow myeloid immature progenitors. CCL9 can activate osteoclasts through its receptor CCR1 (the most abundant chemokine receptor found on osteoclasts) suggesting an important role for CCL9 in bone resorption.

### For Research Use Only