

## Recombinant Human CD38 Protein (His Tag)

**Catalog Number: PKSH033780**

**Note:** Centrifuge before opening to ensure complete recovery of vial contents.

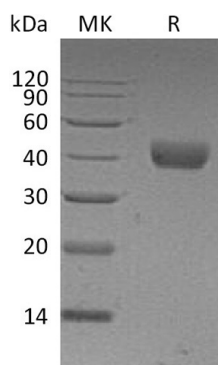
### Description

<b>Species</b>	Human
<b>Source</b>	HEK293 Cells-derived Human CD38 protein Val43-Ile300, with an C-terminal His
<b>Calculated MW</b>	30.7 kDa
<b>Observed MW</b>	38-50 kDa
<b>Accession</b>	P28907
<b>Bio-activity</b>	Not validated for activity

### Properties

<b>Purity</b>	> 95 % as determined by reducing SDS-PAGE.
<b>Concentration</b>	Subject to label value.
<b>Endotoxin</b>	< 1.0 EU per µg of the protein as determined by the LAL method.
<b>Storage</b>	Store at < -20°C, stable for 6 months. Please minimize freeze-thaw cycles.
<b>Shipping</b>	This product is provided as liquid. It is shipped at frozen temperature with blue ice/gel packs. Upon receipt, store it immediately at < - 20°C.
<b>Formulation</b>	Supplied as a 0.2 µm filtered solution of PBS, pH7.4.

### Data



> 95 % as determined by reducing SDS-PAGE.

### Background

CD38; also known as ADP-ribosyl cyclase/cyclic ADP-ribose hydrolase 1; is a Signal-anchor for type II membrane protein. CD38 is able to transform NAD<sup>+</sup> to ADP-D-ribose and nicotinamide. It also can transform NADP<sup>+</sup> to nicotinate-adenine dinucleotide phosphate and nicotinamide. CD38 is expressed at high levels in pancreas; liver; kidney; brain; testis; ovary; placenta; malignant lymphoma and neuroblastoma. Synthesizes the second messengers cyclic ADP-ribose and nicotinate-adenine dinucleotide phosphate; the former a second messenger for glucose-induced insulin secretion. Also has cADPr hydrolase activity. Also moonlights as a receptor in cells of the immune system.