

## PE Anti-Human CD197/CCR7 Antibody[G043H7]

**Catalog Number:** E-AB-F1159D

**Note:** Centrifuge before opening to ensure complete recovery of vial contents.

### Description

<b>Reactivity</b>	Human
<b>Host</b>	Mouse
<b>Isotype</b>	Mouse IgG2a, $\kappa$
<b>Clone No.</b>	G043H7
<b>Isotype Control</b>	PE Mouse IgG2a, $\kappa$ Isotype Control[C1.18.4] [Product E-AB-F09802D]
<b>Conjugation</b>	PE
<b>Conjugation Information</b>	PE is designed to be excited by the Blue (488 nm), Green (532 nm) and Yellow-Green (561 nm) lasers and detected using an optical filter centered near 575 nm (e.g., a 585/42 nm bandpass filter).
<b>Storage Buffer</b>	Phosphate buffered solution, pH 7.2, containing 0.09% stabilizer and 1% protein protectant.

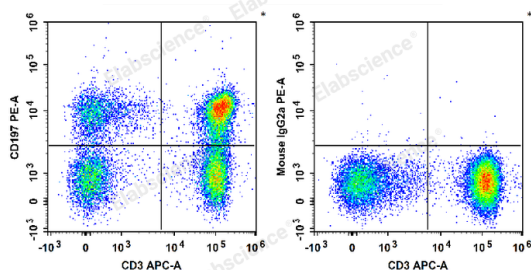
### Applications

### Recommended usage

#### FCM

Each lot of this antibody is quality control tested by flow cytometric analysis. **The amount of the reagent is suggested to be used 5  $\mu$ L of antibody per test (million cells in 100  $\mu$ L staining volume or per 100  $\mu$ L of whole blood).** Please check your vial before the experiment. Since applications vary, the appropriate dilutions must be determined for individual use.

### Data



Human peripheral blood lymphocytes are stained with APC Anti-Human CD3 Antibody and PE Anti-Human CD197/CCR7 Antibody (Left). Lymphocytes are stained with APC Anti-Human CD3 Antibody and PE Mouse IgG2a,  $\kappa$  Isotype Control (Right).

### Preparation & Storage

<b>Storage</b>	Keep as concentrated solution. This product can be stored at 2-8°C for 12 months. Please protected from prolonged exposure to light and do not freeze.
<b>Shipping</b>	Ice bag

### Antigen Information

<b>Alternate Names</b>	EBI1EV1;CCR-7;CDw197;CMKBR7
------------------------	-----------------------------

### For Research Use Only

**Uniprot ID**

P32248

**Gene ID**

1236

**Background**

CCR7, also known as CD197, is a chemokine receptor that binds CCL19 and CCL21. CCR7 and its ligands link innate and adaptive immunity by affecting interactions between T cells and dendritic cells and their downstream effect. Naïve T cells enter the lymph node through high endothelial venules, which express CCL21. Dendritic cells and macrophages enter the lymph node through afferent lymphatics. The encounter of T cells and dendritic cells in the T cell zone is CCR7-dependent. In addition, during immunological surveillance, B cells recirculate between B-cell-rich compartments (follicles or B cell zones) in secondary lymphoid organs, surveying for antigen. After antigen binding, B cells move to the boundary of B and T zones to interact with T-helper cells; this B cell migration is directed by CCR7 and its ligands. CCR7-positive cancer cell expression has been associated with lymph node metastasis.

**For Research Use Only**