

## Elab Fluor® Violet 610 Anti-Mouse MHC II Antibody[M5/114]

**Catalog Number:** E-AB-F0990T

**Note:** Centrifuge before opening to ensure complete recovery of vial contents.

### Description

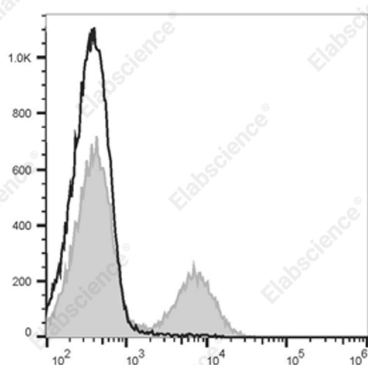
|                                |  |
|--------------------------------|--|
| <b>Reactivity</b>              | Mouse  |
| <b>Host</b>                    | Rat  |
| <b>Isotype</b>                 | Rat IgG2b, $\kappa$  |
| <b>Clone No.</b>               | M5/114   |
| <b>Isotype Control</b>         | Elab Fluor® Violet 610 Rat IgG2b, $\kappa$ Isotype Control[LTF-2] [Product E-AB-F09842T]   |
| <b>Conjugation</b>             | Elab Fluor® Violet 610   |
| <b>Conjugation Information</b> | Elab Fluor® Violet 610 is designed to be excited by the violet laser (405 nm) and detected using an optical filter centered near 613 nm (e.g., a 615/20 nm bandpass filter). |
| <b>Storage Buffer</b>          | Phosphate buffered solution, pH 7.2, containing 0.09% stabilizer and 1% protein protectant.  |

### Applications

### Recommended usage

|            |  |
|------------|--|
| <b>FCM</b> | Each lot of this antibody is quality control tested by flow cytometric analysis. <b>The amount of the reagent is suggested to be used 5 <math>\mu</math>L of antibody per test (million cells in 100 <math>\mu</math>L staining volume or per 100 <math>\mu</math>L of whole blood).</b> Please check your vial before the experiment. Since applications vary, the appropriate dilutions must be determined for individual use. |
|------------|--|

### Data



Staining of C57BL/6 murine splenocytes with Elab Fluor® Violet 610 Anti-Mouse MHC II (I-A/I-E) Antibody[M5/114]

(filled gray histogram) or Elab Fluor® Violet 610 Rat IgG2b,  $\kappa$  Isotype Control (empty black histogram). Total viable cells were used for analysis.

### Preparation & Storage

|                 |   |
|-----------------|---|
| <b>Storage</b>  | Keep as concentrated solution.<br>This product can be stored at 2-8°C for 12 months. Please protected from prolonged exposure to light and do not freeze. |
| <b>Shipping</b> | Ice bag   |

### Antigen Information

|                        |  |
|------------------------|--|
| <b>Alternate Names</b> | H2-Ab1/Eb1;I-E beta MHC class II;MHC class II;MHC class II H2-IA-beta-psi;Major histocompatibility protein class II beta chain |
|------------------------|--|

### For Research Use Only

Toll-free: 1-888-852-8623  
Web: [www.elabscience.com](http://www.elabscience.com)

Tel: 1-832-243-6086  
Email: [techsupport@elabscience.com](mailto:techsupport@elabscience.com)

Fax: 1-832-243-6017

Rev. V1.7

|                   |  |
|-------------------|--|
| <b>Uniprot ID</b> | P14483;O78196;   |
| <b>Gene ID</b>    | 14961;14969  |
| <b>Background</b> | These class II molecules are expressed on antigen presenting cells (including B cells) and a subset of T cells from H-2b,d,q,r bearing mice and are involved in antigen presentation to T cells expressing CD3/TCR and CD4 proteins. |