

# PHC3 Polyclonal Antibody

Catalog Number: E-AB-66227



**Note:** Centrifuge before opening to ensure complete recovery of vial contents.

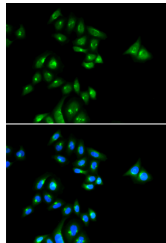
## Description

<b>Reactivity</b>	Human
<b>Immunogen</b>	Recombinant fusion protein of human PHC3 (NP_079223.3).
<b>Host</b>	Rabbit
<b>Isotype</b>	IgG
<b>Purification</b>	Affinity purification
<b>Conjugation</b>	Unconjugated
<b>Formulation</b>	PBS with 0.02% sodium azide, 50% glycerol, pH7.3.

## Applications Recommended Dilution

<b>IF</b>	1:50-1:100
-----------	------------

## Data



Immunofluorescence analysis of U2OS cells using PHC3 Polyclonal Antibody

## Preparation & Storage

**Storage** Store at -20°C. Avoid freeze / thaw cycles.

## Background

PHC3 (Polyhomeotic Homolog 3) is a Protein Coding gene. Diseases associated with PHC3 include Severe Combined Immunodeficiency, Autosomal Recessive, T Cell-Negative, B Cell-Positive, Nk Cell-Negative and Hyperoxaluria, Primary, Type Iii. Among its related pathways are Metabolism of proteins and SUMOylation. Gene Ontology (GO) annotations related to this gene include sequence-specific DNA binding. An important paralog of this gene is PHC2.

## For Research Use Only

A Reliable Research Partner in Life Science and Medicine

Toll-free: 1-888-852-8623

Web: [www.elabscience.com](http://www.elabscience.com)

Tel: 1-832-243-6086

Email: [techsupport@elabscience.com](mailto:techsupport@elabscience.com)

Fax: 1-832-243-6017