

Recombinant Human LAIR2/CD306 Protein (His Tag)

Catalog Number:PDMH100012



Note: Centrifuge before opening to ensure complete recovery of vial contents.

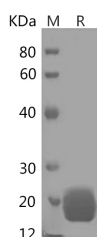
Description

Synonyms	Leukocyte-Associated Immunoglobulin-Like Receptor 2;LAIR-2;CD306;LAIR2
Species	Human
Expression Host	HEK293 Cells
Sequence	Gln22-Pro152
Accession	Q6ISS4
Calculated Molecular Weight	15.1 kDa
Observed molecular weight	19 kDa
Tag	C-His

Properties

Purity	> 95 % as determined by reducing SDS-PAGE.
Endotoxin	< 1.0 EU per µg of the protein as determined by the LAL method.
Storage	Generally, lyophilized proteins are stable for up to 12 months when stored at -20 to -80°C. Reconstituted protein solution can be stored at 4-8°C for 2-7 days. Aliquots of reconstituted samples are stable at < -20°C for 3 months.
Shipping	This product is provided as lyophilized powder which is shipped with ice packs.
Formulation	Lyophilized from a 0.2 µm filtered solution of 20mM PB, 150mM NaCl, pH 7.4. Normally 5 % - 8 % trehalose, mannitol and 0.01% Tween80 are added as protectants before lyophilization. Please refer to the specific buffer information in the printed man
Reconstitution	Please refer to the printed manual for detailed information.

Data



> 95 % as determined by reducing SDS-PAGE.

Background

Leukocyte-Associated Immunoglobulin-Like Receptor 2 (LAIR2) is a secreted, 131 amino acid protein that contains one Ig-like C2 type domain, making it a member of the Ig superfamily. When compared to LAIR-1, its transmembrane counterpart, it shares 83% amino acid identity across the signal sequence and extracellular domains; although one is secreted and one is membrane-bound, the two LAIR proteins are thought to have arisen from a common gene ancestor and appear to share similar adhesion profiles. This suggests that LAIR-2 may compete with LAIR-1 for ligand binding. A 114 amino acid alternate splice form of LAIR-2 is truncated at the C terminus, but retains the entire Ig domain. The expression profile of these splice forms, and the presence of orthologs in other species, have not been reported.

For Research Use Only

A Reliable Research Partner in Life Science and Medicine

Toll-free: 1-888-852-8623

Web: www.elabscience.com

Tel: 1-832-243-6086

Email: techsupport@elabscience.com

Fax: 1-832-243-6017