

## NES Monoclonal Antibody

catalog number: E-AB-70343

**Note:** Centrifuge before opening to ensure complete recovery of vial contents.

### Description

<b>Reactivity</b>	Human;Mouse;Rat
<b>Immunogen</b>	Recombinant protein corresponding to Mouse Nestin
<b>Host</b>	Mouse
<b>Isotype</b>	IgG
<b>Clone</b>	1A12D12
<b>Purification</b>	Affinity purification
<b>Conjugation</b>	Unconjugated
<b>Buffer</b>	Phosphate buffered solution, pH 7.4, containing 0.05% stabilizer, 1% protein protectant and 50% glycerol.

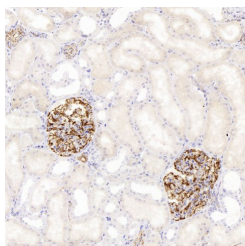
### Applications

### Recommended Dilution

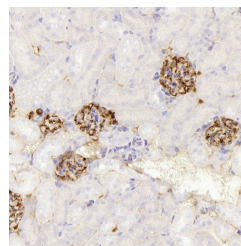
IHC

1:200-1:800

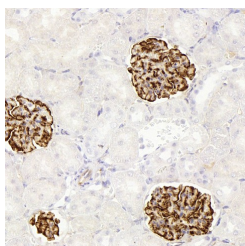
### Data



Immunohistochemistry analysis of paraffin-embedded human kidney using NES Monoclonal Antibody at dilution of 1:400.



Immunohistochemistry analysis of paraffin-embedded mouse kidney using NES Monoclonal Antibody at dilution of 1:400.



Immunohistochemistry analysis of paraffin-embedded rat kidney using NES Monoclonal Antibody at dilution of 1:400.

### Preparation & Storage

**Storage**

Store at -20°C Valid for 12 months. Avoid freeze / thaw cycles.

**Shipping**

The product is shipped with ice pack, upon receipt, store it immediately at the temperature recommended.

### Background

Nestin, also named as NES and Nbla00170, is a class VI intermediate filament protein expressed in stem cells of the central nervous system (CNS) but not in mature CNS cells. Its expression is used extensively as a marker for neural lineage cells derived from human embryonic stem (hES) and induced pluripotent stem (iPS) cells. Nestin is also expressed in non-neural stem cell populations such as pancreatic islet progenitors and hematopoietic progenitors.

### For Research Use Only