

IRX1 Polyclonal Antibody

Catalog Number:E-AB-52040



Note: Centrifuge before opening to ensure complete recovery of vial contents.

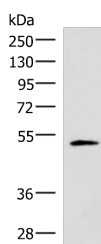
Description

Reactivity	Human, Mouse
Immunogen	Synthetic peptide of human IRX1
Host	Rabbit
Isotype	IgG
Purification	Antigen affinity purification
Conjugation	Unconjugated
Formulation	PBS with 0.05% NaN ₃ and 40% Glycerol,pH7.4

Applications Recommended Dilution

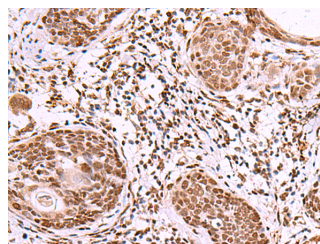
WB	1:500-1:2000
IHC	1:40-1:200
ELISA	1:5000-1:10000

Data

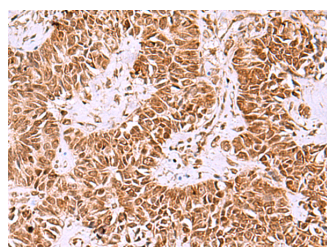


Western blot analysis of Human heart tissue lysate using IRX1 Polyclonal Antibody at dilution of 1:400

Observed Mw:Refer to figures
Calculated Mw:50 kDa



Immunohistochemistry of paraffin-embedded Human esophagus cancer tissue using IRX1 Polyclonal Antibody at dilution of 1:40(×200)



Immunohistochemistry of paraffin-embedded Human ovarian cancer tissue using IRX1 Polyclonal Antibody at dilution of 1:40(×200)

Preparation & Storage

Storage Store at -20°C. Avoid freeze / thaw cycles.

Background

This gene encodes a member of the Iroquois homeobox protein family. Homeobox genes in this family are involved in

For Research Use Only

A Reliable Research Partner in Life Science and Medicine

Toll-free: 1-888-852-8623

Web: www.elabscience.com

Tel: 1-832-243-6086

Email: techsupport@elabscience.com

Fax: 1-832-243-6017

IRX1 Polyclonal Antibody

Catalog Number: E-AB-52040



pattern formation in the embryo. The gene product has been identified as a tumor suppressor in gastric and head and neck cancers. A pseudogene of this gene is located on chromosome 13.

For Research Use Only

A Reliable Research Partner in Life Science and Medicine

Toll-free: 1-888-852-8623

Tel: 1-832-243-6086

Fax: 1-832-243-6017

Web: www.elabscience.com

Email: techsupport@elabscience.com